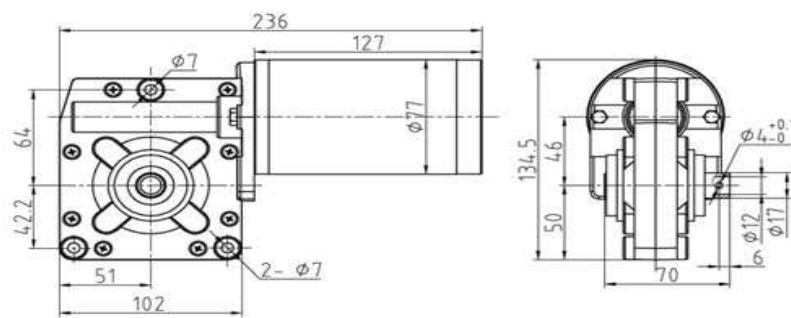


Model: RP-Q-180



Drawing: RP-Q-180



Specification:

Voltage: 12V	Power: 180W
Gear ratio:25:1	Output speed:150-160rpm
Free load current: 1.7-1.8A	Onload current: 9-12A
Torque:30-45N.m	Shaft diameter: 12.5mm
Net weight: 2.3kg	Weight capacity: 40kg
Packing size: 36*32*31cm	

Summary: Permanent Magnetic DC gear motor, which has such features: low noise, low vibration and long-using time and so on, is mainly used for electric hand-pushing golf trolley, remote control golf trolley and other electric equipment.