

- Wide range of motor sizes & voltages
- Very high continuous torque
- Rugged construction
- Low audible noise

01 Brushed DC Motors

3X MOTION permanent magnet brushed dc motors are widely used in rotary pumps, clay pigeon traps, electric vehicles, golf carts, hoists, winches and a multitude of other applications.

Breakdown Of Part Number:

90	ZYT	155	12
diameter	brushed dc motor	length	input voltage

Customisation Options:

Brake

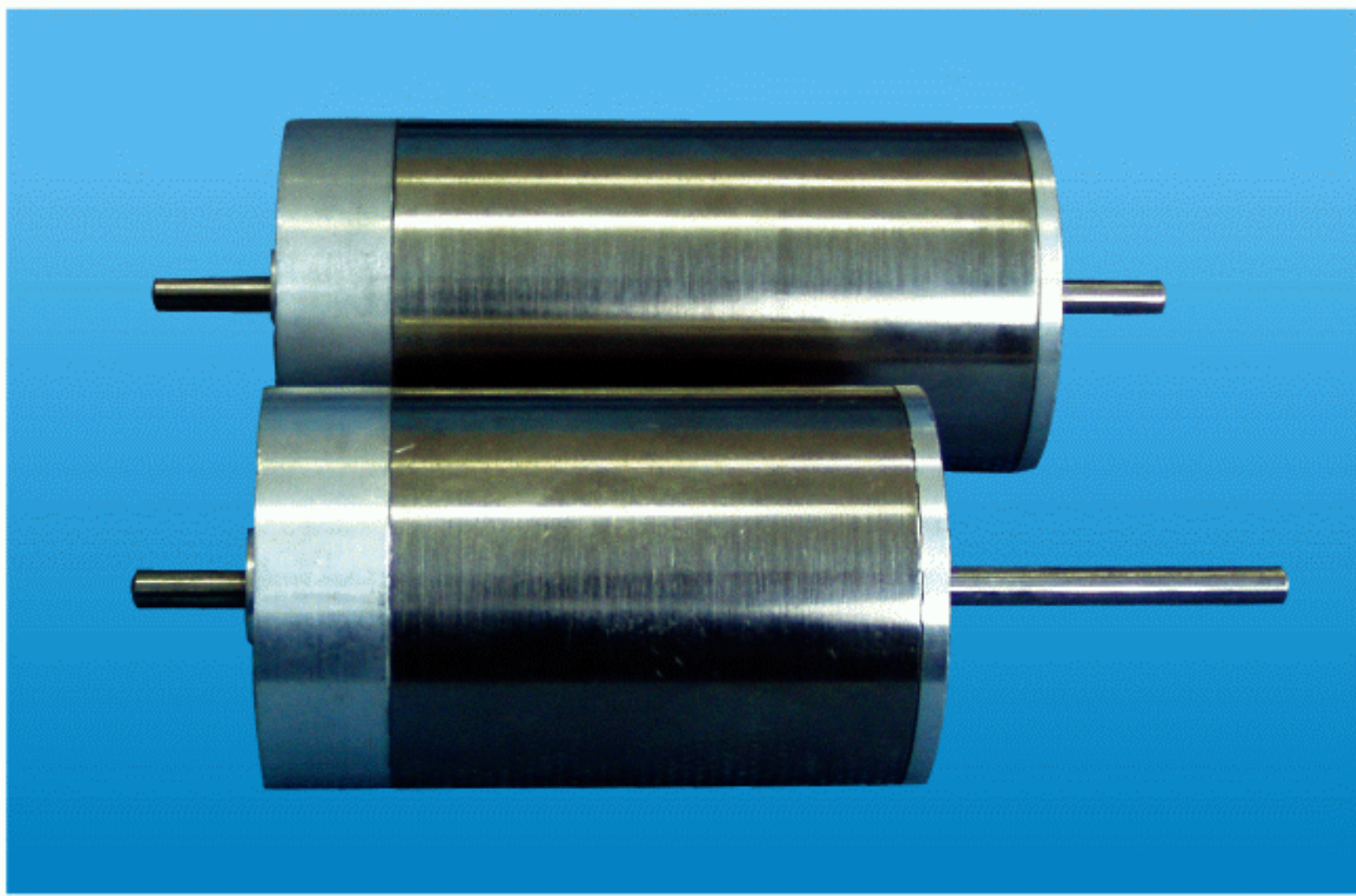
All permanent magnet brushed dc motors can be supplied with a choice of 12 or 24v parking brake. An optional manual brake release is also available.

Encoder

3X MOTION permanent magnet brushed motors can be supplied with a variety of encoder types and resolutions.

Custom Shaft

All permanent magnet brushed dc motors are available to order with a wide selection of custom shaft configurations.



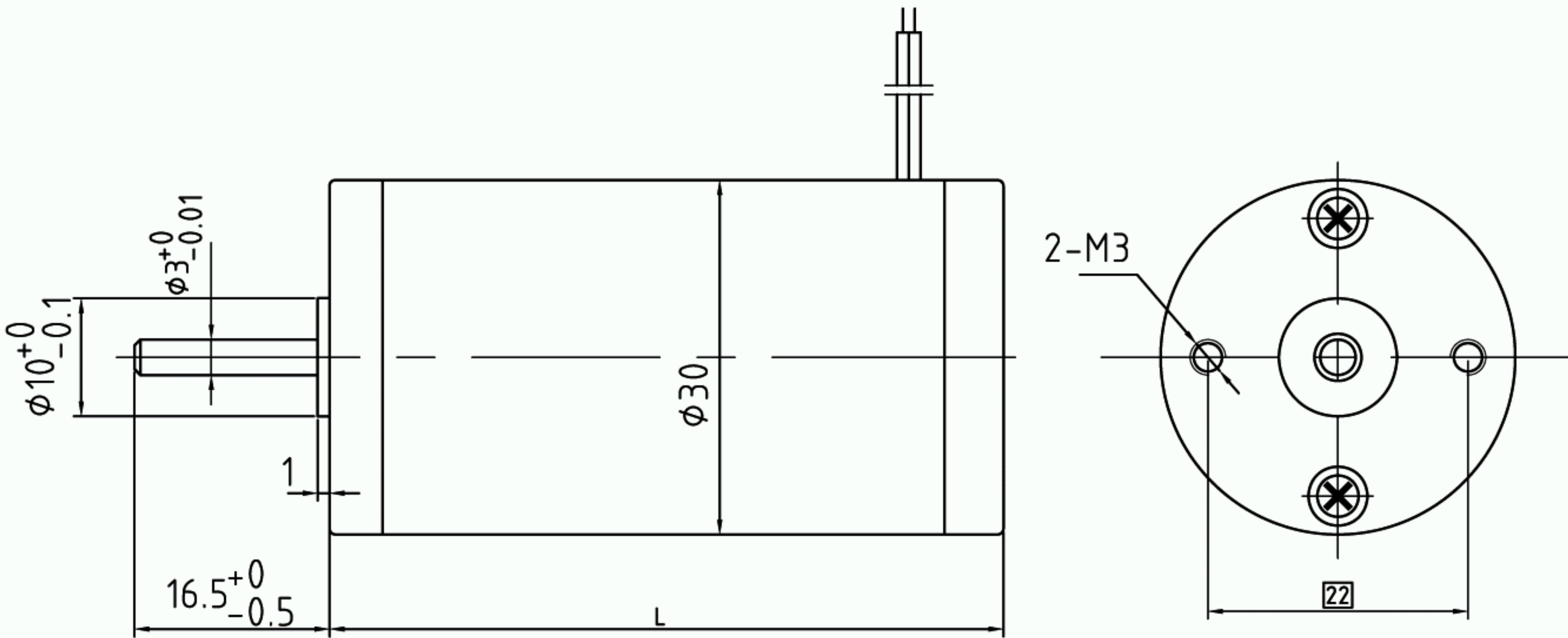
General Specification

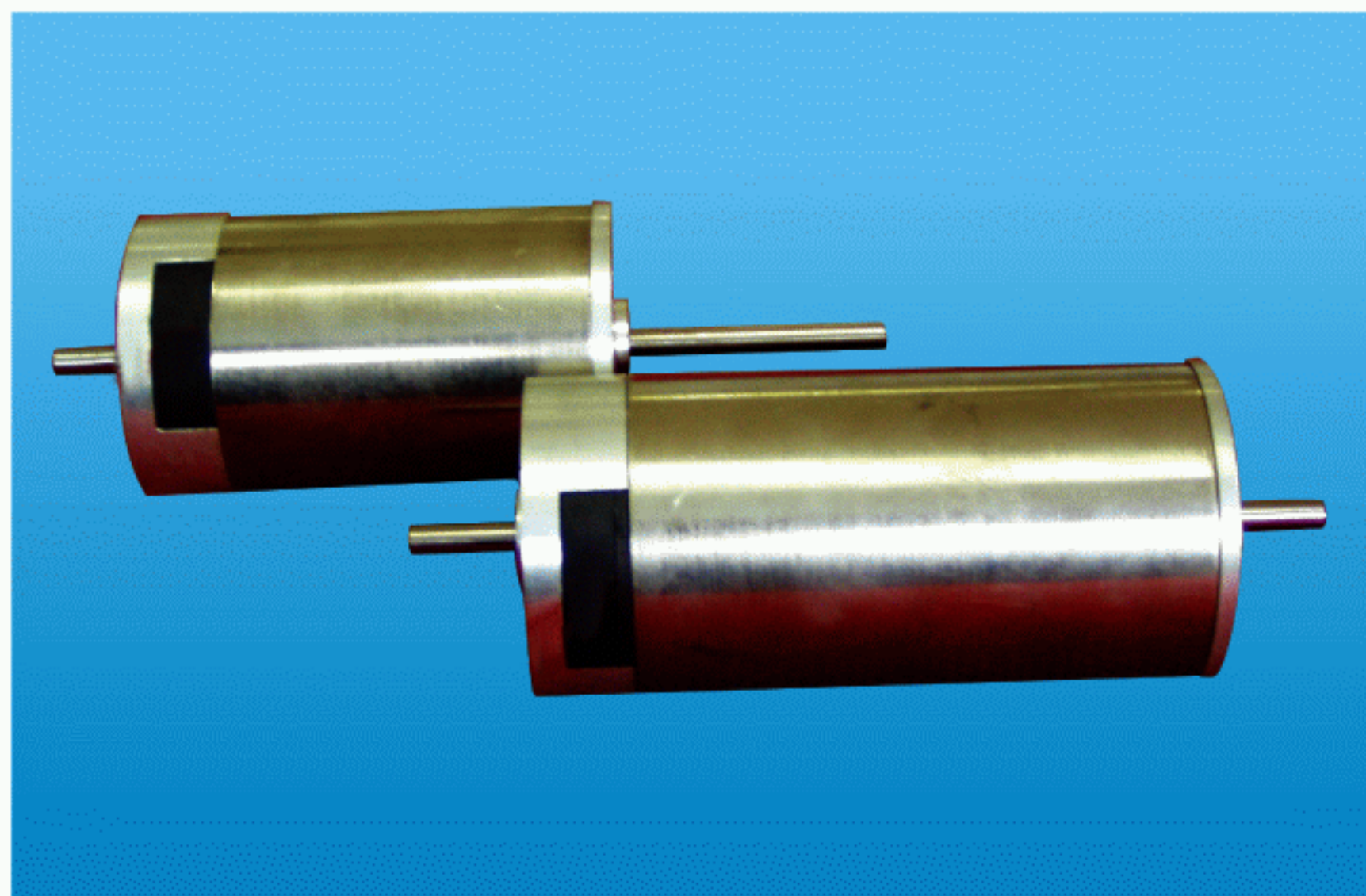
Voltage Range	12 & 24v dc (up to 240v available)
Power Output Range	5 to 20 watts
Speed Range	up to 10,000rpm
Operational Temperature	-20° C to +40° C
Insulation Class	F (consult us for class B)
Bearing Type	High quality ball bearings
Housing Type	Closed (ventilated also available)

Performance Data

Part Number	Voltage	Rated Power	Rated Speed	Rated Torque	Rated Current	No load Speed	Length
Units	V	W	rpm	mNm	A	rpm	mm
30ZYT51 -12V	12	8.17	7100	11	0.79	7900	51
30ZYT51 -24V	24	8.17	7100	11	0.41	7900	51
30ZYT60 -12V	12	15.1	7100	16	1.45	10000	60
30ZYT60 -24V	24	15.1	7100	16	0.73	10000	60

Dimensions in mm





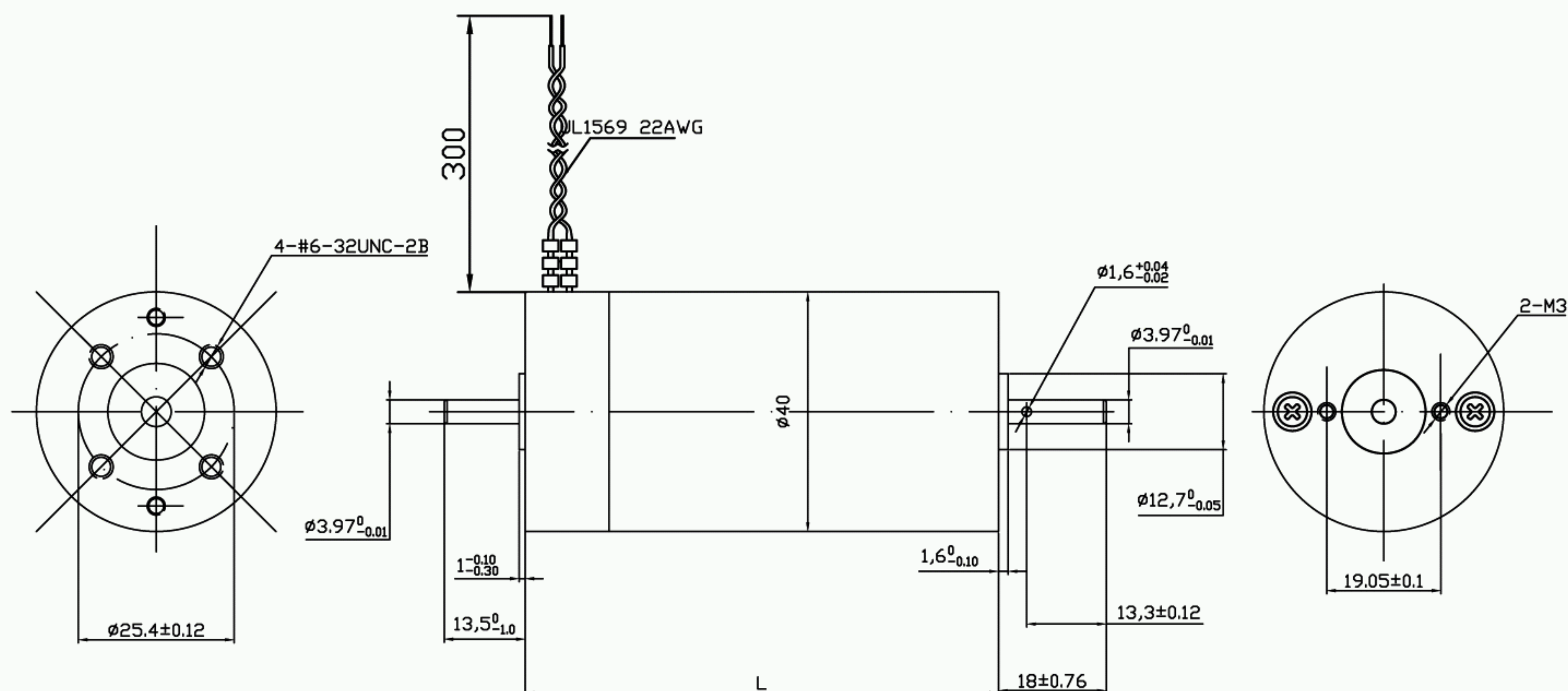
General Specification

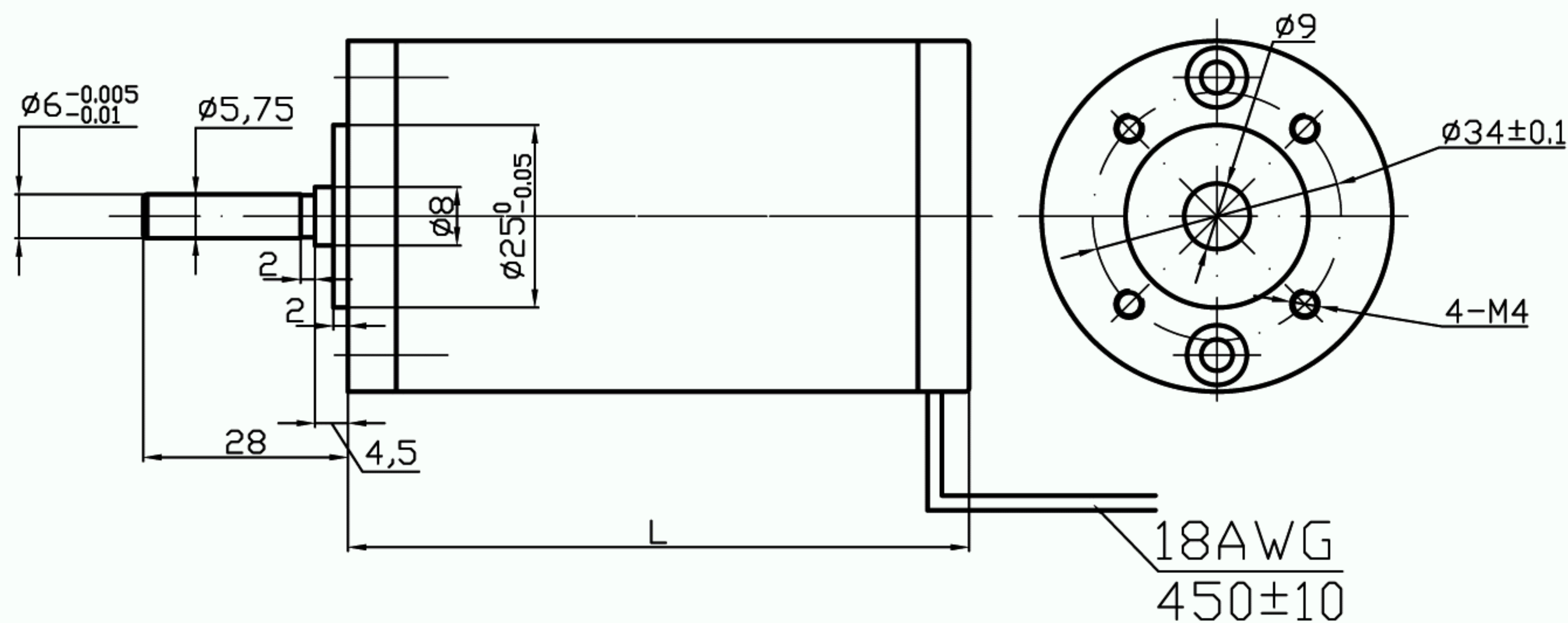
Voltage Range	12 & 24v dc (240v also available)
Power Output Range	15 to 40 watts
Speed Range	up to 10,000rpm
Operational Temperature	-20° C to +40° C
Insulation Class	F (consult us for class B)
Bearing Type	High quality ball bearings
Housing Type	Closed (ventilated also available)

Performance Data

Part Number	Voltage	Rated Power	Rated Speed	Rated Torque	Rated Current	No load Speed	Length
Units	V	W	rpm	mNm	A	rpm	mm
40ZYT56 -12V	12	17	4950	33	1.8	6000	56
40ZYT61 -12V	12	23	5100	43	2.39	6100	61
40ZYT78 -12V	12	29	5000	67	2.92	5000	78
40ZYT56 -24V	24	17	4950	33	0.89	6100	56
40ZYT61 -24V	24	23	5100	43	1.17	6100	61
40ZYT78 -24V	24	29	4200	67	1.46	5000	78

Dimensions in mm







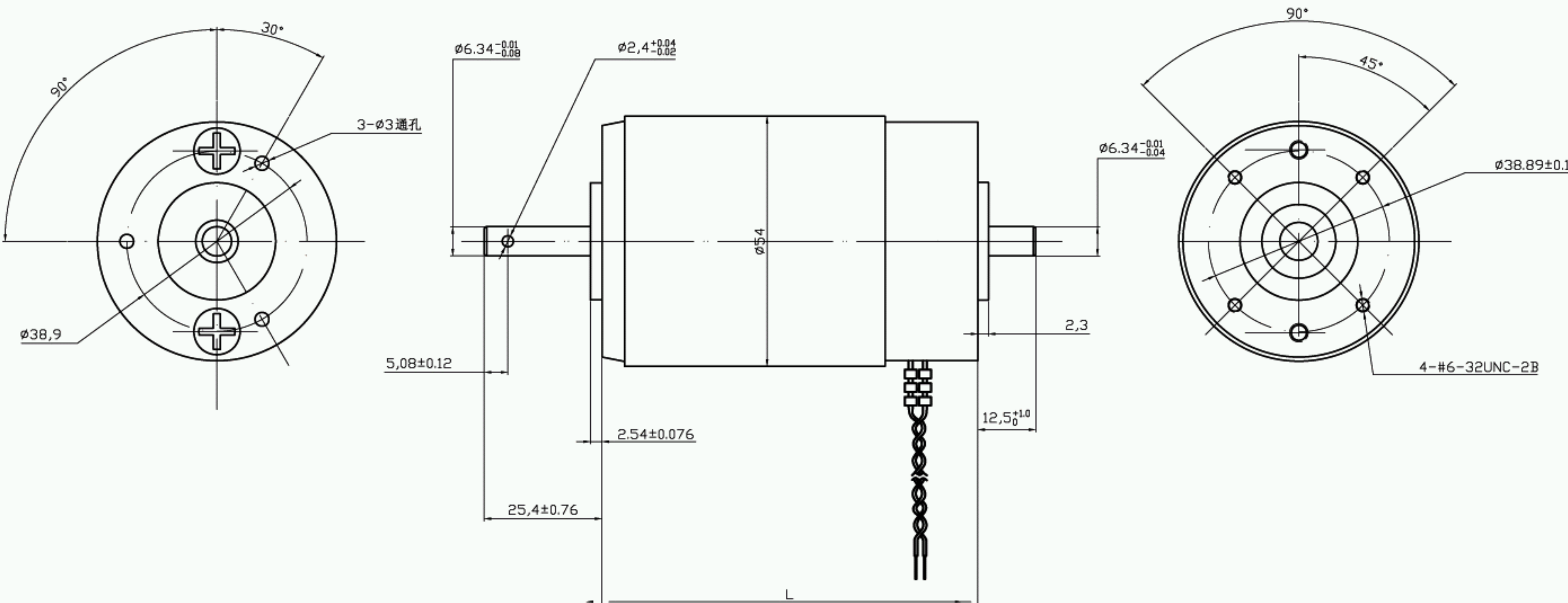
General Specification

Voltage Range	12 & 24v dc (240v also available)
Power Output Range	30 to 100 watts
Speed Range	up to 10,000rpm
Operational Temperature	-20° C to +40° C
Insulation Class	F (consult us for class B)
Bearing Type	High quality ball bearings
Housing Type	Closed (ventilated also available)

Performance Data

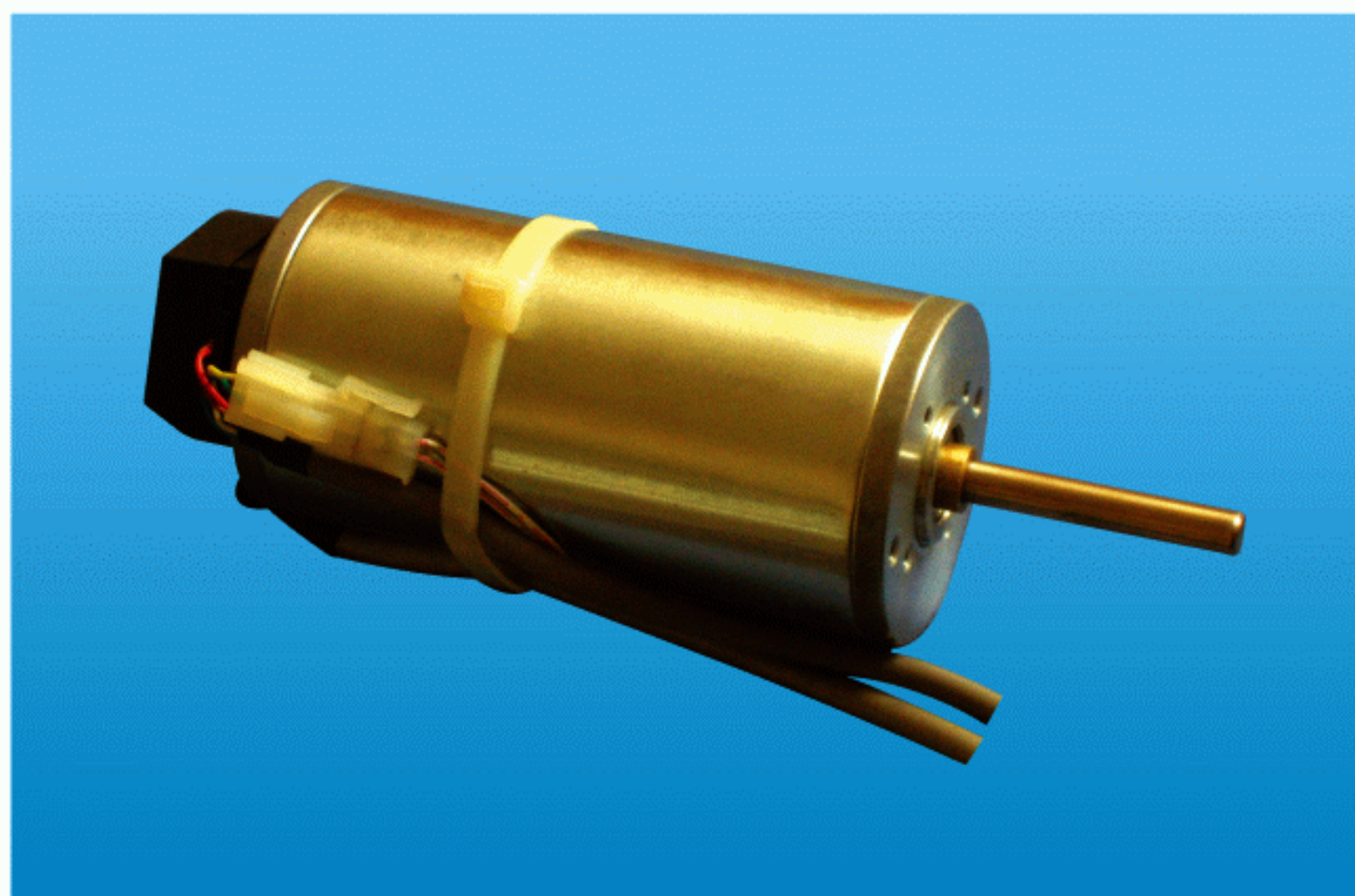
Part Number	Voltage	Rated Power	Rated Speed	Rated Torque	Rated Current	No load Speed	Length
Units	V	W	rpm	mNm	A	rpm	mm
54ZYT75 -12V	12	28.2	3800	71	2.8	4500	75
54ZYT94 -12V	12	46.5	3000	148	4.6	3800	94
54ZYT103 -12V	12	65.5	3400	184	6.2	4000	103
54ZYT75 -24V	24	28.2	3800	71	1.4	4500	75
54ZYT94 -24V	24	46.5	3000	148	2.3	3800	94
54ZYT103 -24V	24	65.5	3400	184	3.1	4000	103

Dimensions in mm



63ZYT Series

Permanent Magnet Brushed DC Motor



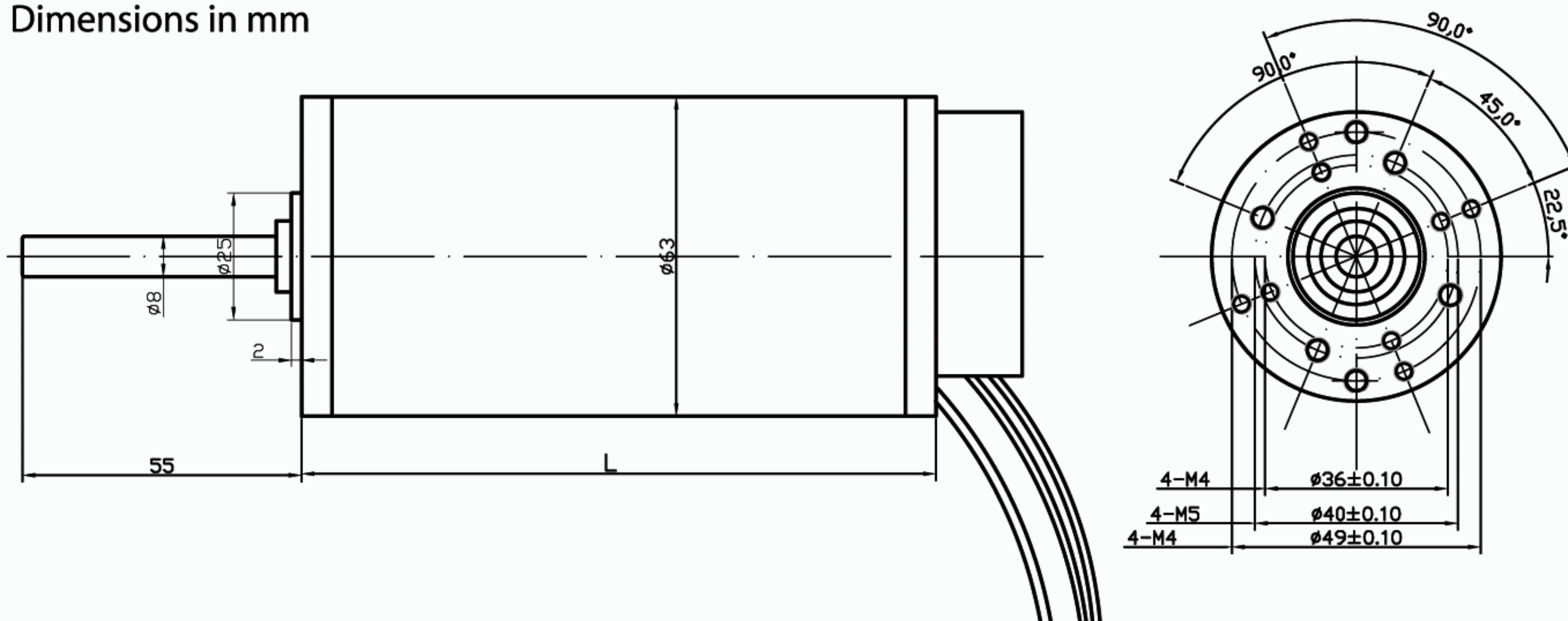
General Specification

Voltage Range	12 & 24v dc (240v also available)
Power Output Range	40 to 100 watts
Speed Range	up to 10,000rpm
Operational Temperature	-20° C to +40° C
Insulation Class	F (consult us for class B)
Bearing Type	High quality ball bearings
Housing Type	Closed (ventilated also available)

Performance Data

Part Number	Voltage	Rated Power	Rated Speed	Rated Torque	Rated Current	No load Speed	Length
Units	V	W	rpm	mNm	A	rpm	mm
63ZYT95 -12V	12	44.5	3100	137	5.2	3600	95
63ZYT95 -24V	24	48.4	3300	140	2.7	3600	95
63ZYT95 -40V	40	48.7	3500	133	1.7	3800	95
63ZYT125 -12V	12	75.4	3000	240	8.7	3500	125
63ZYT125 -24V	24	94.7	3350	270	4.9	3650	125
63ZYT125 -40V	40	97.5	3450	270	3	3600	125

Dimensions in mm





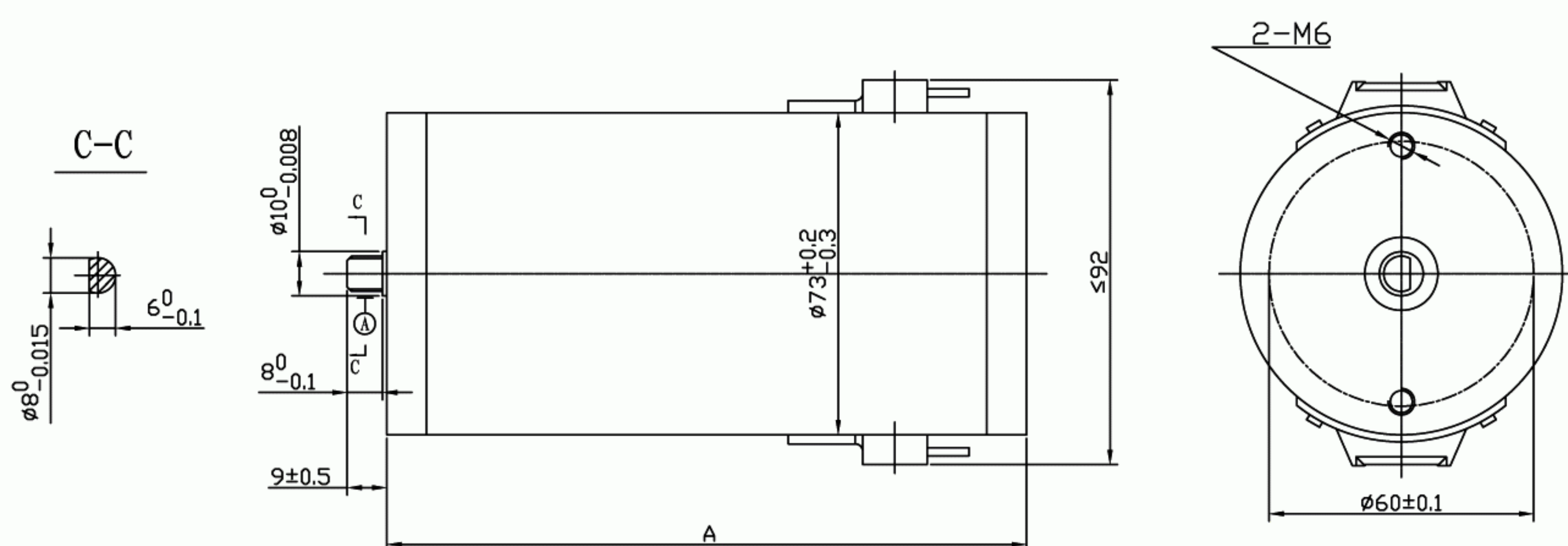
General Specification

Voltage Range	12 & 24v dc (48v also available)
Power Output Range	90 to 150 watts
Speed Range	up to 9,000rpm
Operational Temperature	-20° C to +40° C
Insulation Class	F (consult us for class B)
Bearing Type	Deep groove ball bearings
Housing Type	Closed (ventilated also available)

Performance Data

Part Number	Voltage	Rated Power	Rated Speed	Rated Torque	Rated Current	No-load Speed	Length
Units	V	W	rpm	mNm	A	rpm	mm
73ZYT127-12V	12	90	4400	200	11.00	4900	127
73ZYT145-12V	12	120	3700	300	15.00	4200	145
73ZYT155-12V	12	135	3200	400	16.50	3600	155
73ZYT165-12V	12	150	3000	500	18.00	3400	165
73ZYT127-24V	24	100	4700	200	5.50	5200	127
73ZYT145-24V	24	130	3900	300	7.50	4500	145
73ZYT155-24V	24	145	3400	400	8.50	3900	155
73ZYT165-24V	24	170	3200	500	9.00	3600	165

Dimensions in mm



80ZYT Series

Permanent Magnet Brushed DC Motor



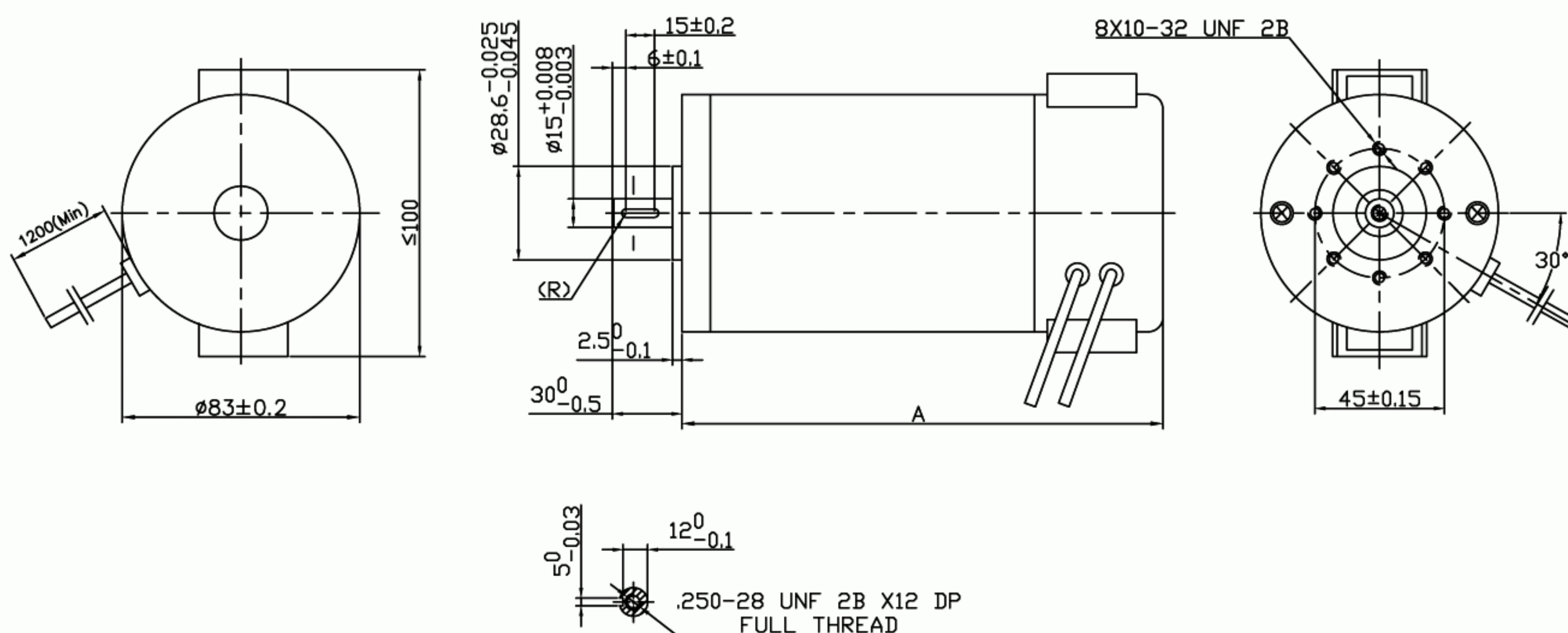
General Specification

Voltage Range	12 & 24v dc (48v also available)
Power Output Range	90 to 150 watts
Speed Range	up to 9,000rpm
Operational Temperature	-20° C to +40° C
Insulation Class	F (consult us for class B)
Bearing Type	Deep groove ball bearings
Housing Type	Closed (ventilated also available)

Performance Data

Part Number	Voltage	Rated Power	Rated Speed	Rated Torque	Rated Current	No load Speed	Length
Units	V	W	rpm	mNm	A	rpm	mm
80ZYT135 -12V	12	106	2900	350	11.5	3200	135
80ZYT135 -24V	24	106	2900	350	5.8	3200	135
80ZYT135 -40V	40	128	3500	350	4	3750	135
80ZYT175 -12V	12	207	3200	620	10	3500	175
80ZYT175 -24V	24	201	3100	620	6	3500	175
80ZYT175 -40V	40	221	3350	630	4.2	3650	175

Dimensions in mm





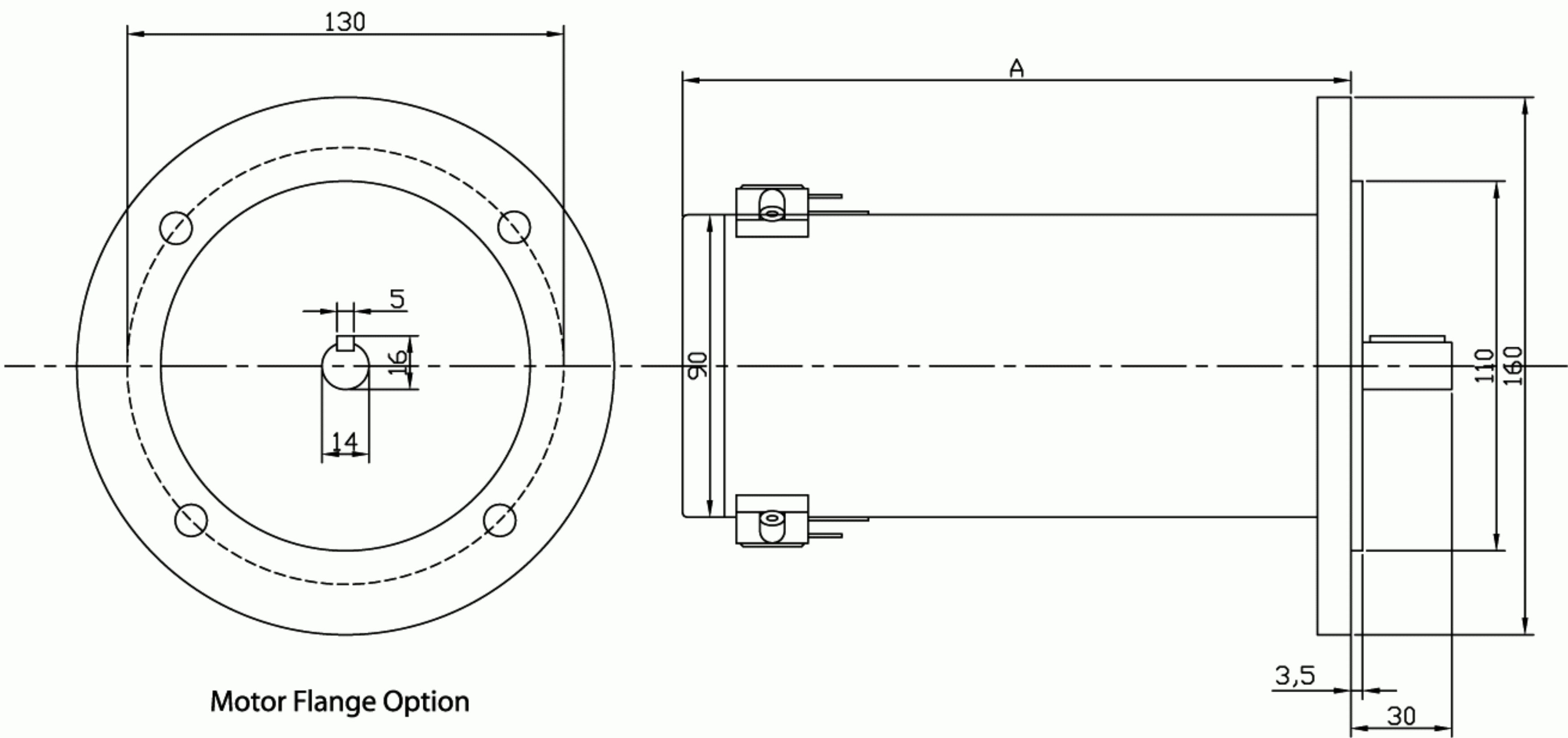
General Specification

Voltage Range	12 & 24v dc (48v also available)
Power Output Range	150 to 300 watts
Speed Range	up to 9,000rpm
Operational Temperature	-20° C to +40° C
Insulation Class	F (consult us for class B)
Bearing Type	Deep groove ball bearings
Housing Type	Closed (ventilated also available)

Performance Data

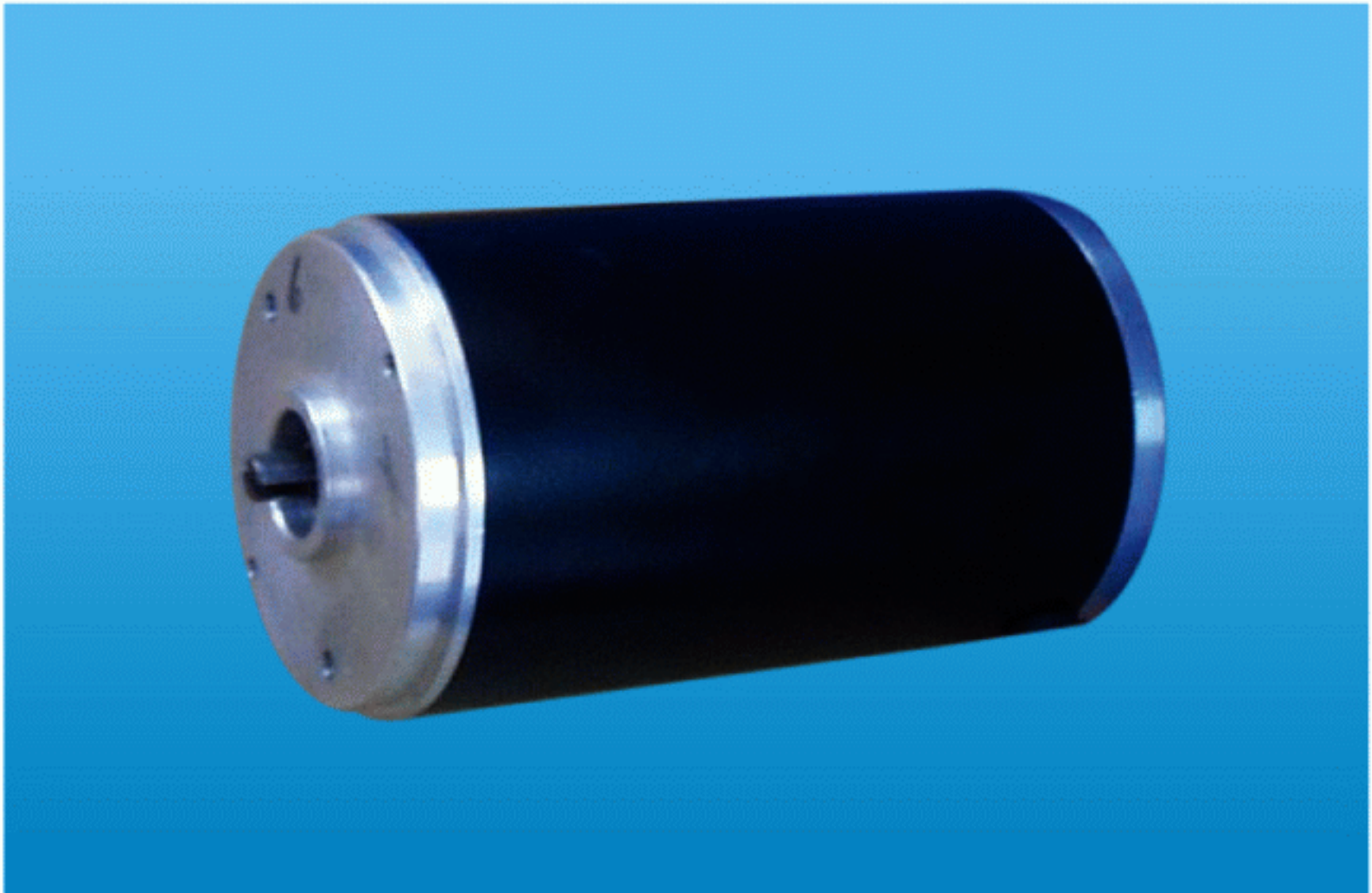
Part Number	Voltage	Rated Power	Rated Speed	Rated Torque	Rated Current	No load Speed	Length
Units	V	W	rpm	mNm	A	rpm	mm
90ZYT155 -12V	12	250	4750	500	27.8	5540	155
90ZYT199 -12V	12	200	1980	955	22.2	2700	199
90ZYT155 -24V	24	250	4750	500	13.8	5100	155
90ZYT199 -24V	24	200	1980	955	11.2	2700	199

Dimensions in mm



100ZYT Series

Permanent Magnet Brushed DC Motor



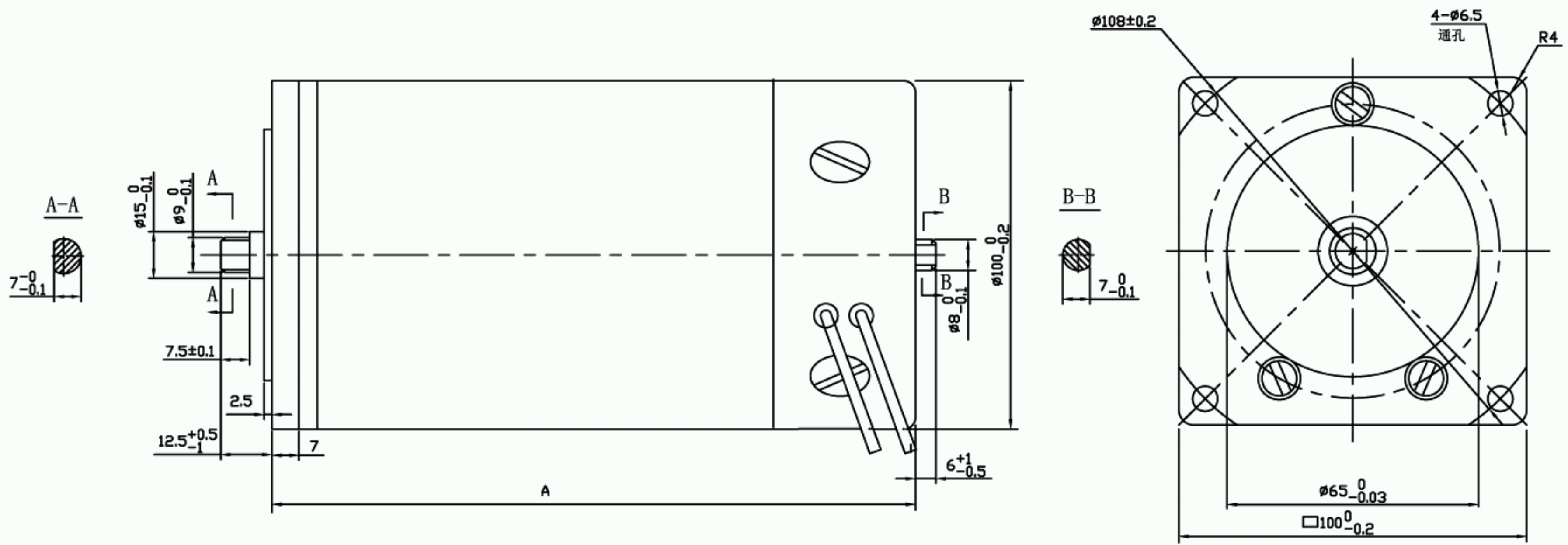
General Specification

Voltage Range	12 & 24v dc (up to 220v available)
Power Output Range	200 to 400 watts
Speed Range	up to 9,000rpm
Operational Temperature	-20° C to +40° C
Insulation Class	F (consult us for class B)
Bearing Type	Deep groove ball bearings
Housing Type	Closed (ventilated also available)

Performance Data

Part Number	Voltage	Rated Power	Rated Speed	Rated Torque	Rated Current	No load Current	No load Speed	Length
Units	V	W	rpm	Nm	A	A	rpm	mm
100ZYT145 -24V	24	290	3450	0.8	15.6	2.3	3920	145
100ZYT165 -12V	12	197	2350	0.8	22.0	3.0	2250	165
100ZYT165 -24V	24	348	4150	0.8	20.3	3.5	4660	165
100ZYT200 -12V	12	188	1500	1.2	24.5	3.0	1900	200

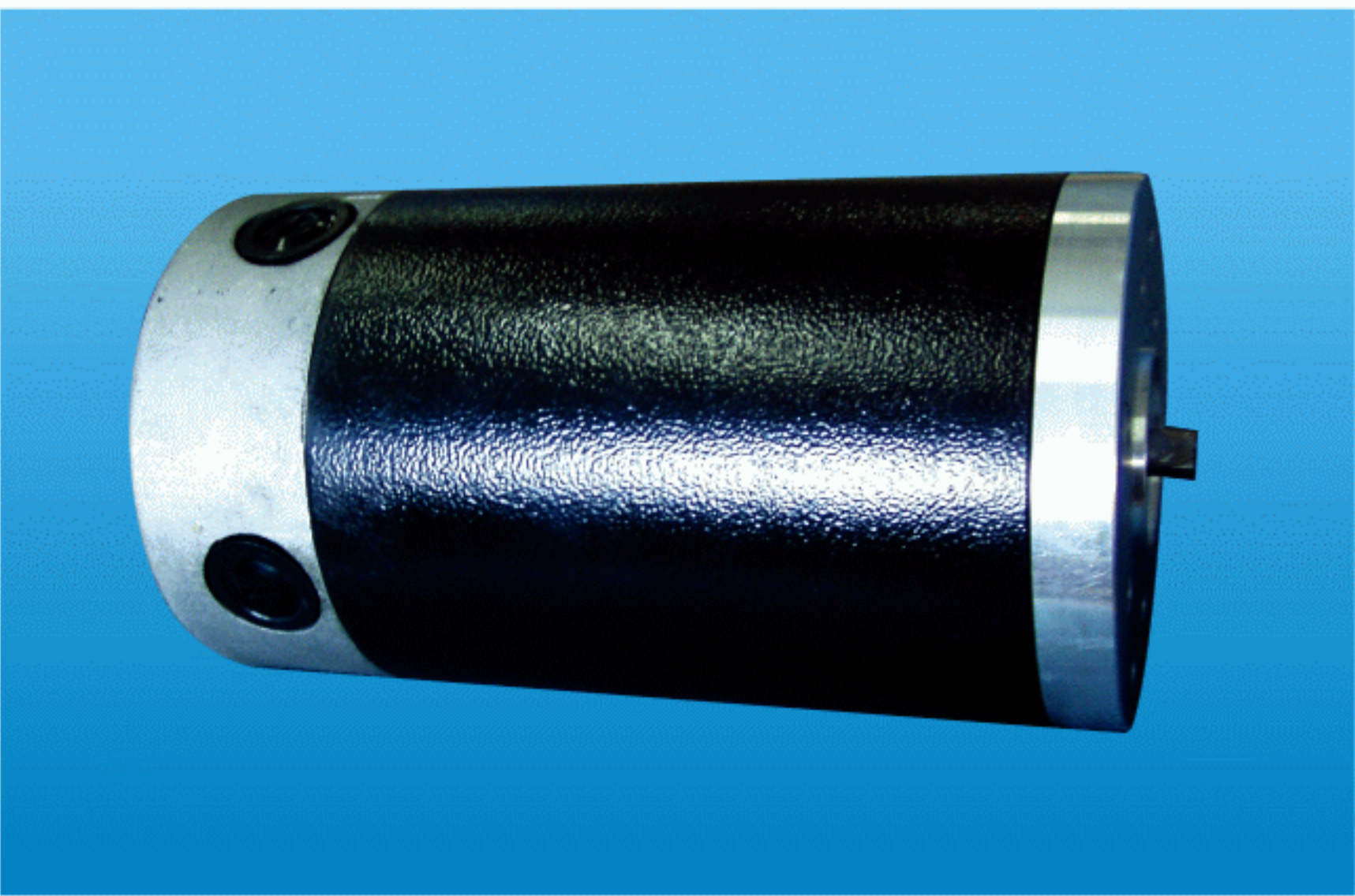
Dimensions in mm



Motor Flange Option

110ZYT Series

Permanent Magnet Brushed DC Motor



General Specification

Voltage Range	24v dc (up to 220v available)
Power Output Range	250 to 600 watts
Speed Range	up to 9,000rpm
Operational Temperature	-20° C to +40° C
Insulation Class	F (consult us for class B)
Bearing Type	Deep groove ball bearings
Housing Type	Closed (ventilated also available)

Performance Data

Part Number	Voltage	Rated Power	Rated Speed	Rated Torque	Rated Current	No load Current	No load Speed	Length
Units	V	W	rpm	Nm	A	A	rpm	mm
110ZYT200 -12V	12	283	2700	1.0	34.6	4.9	3270	200
110ZYT200 -24V	24	514	3070	1.6	26.0	2.6	3350	200
110ZYT200 -48V	48	553	3300	1.6	14.3	2.5	3300	200

Dimensions in mm

