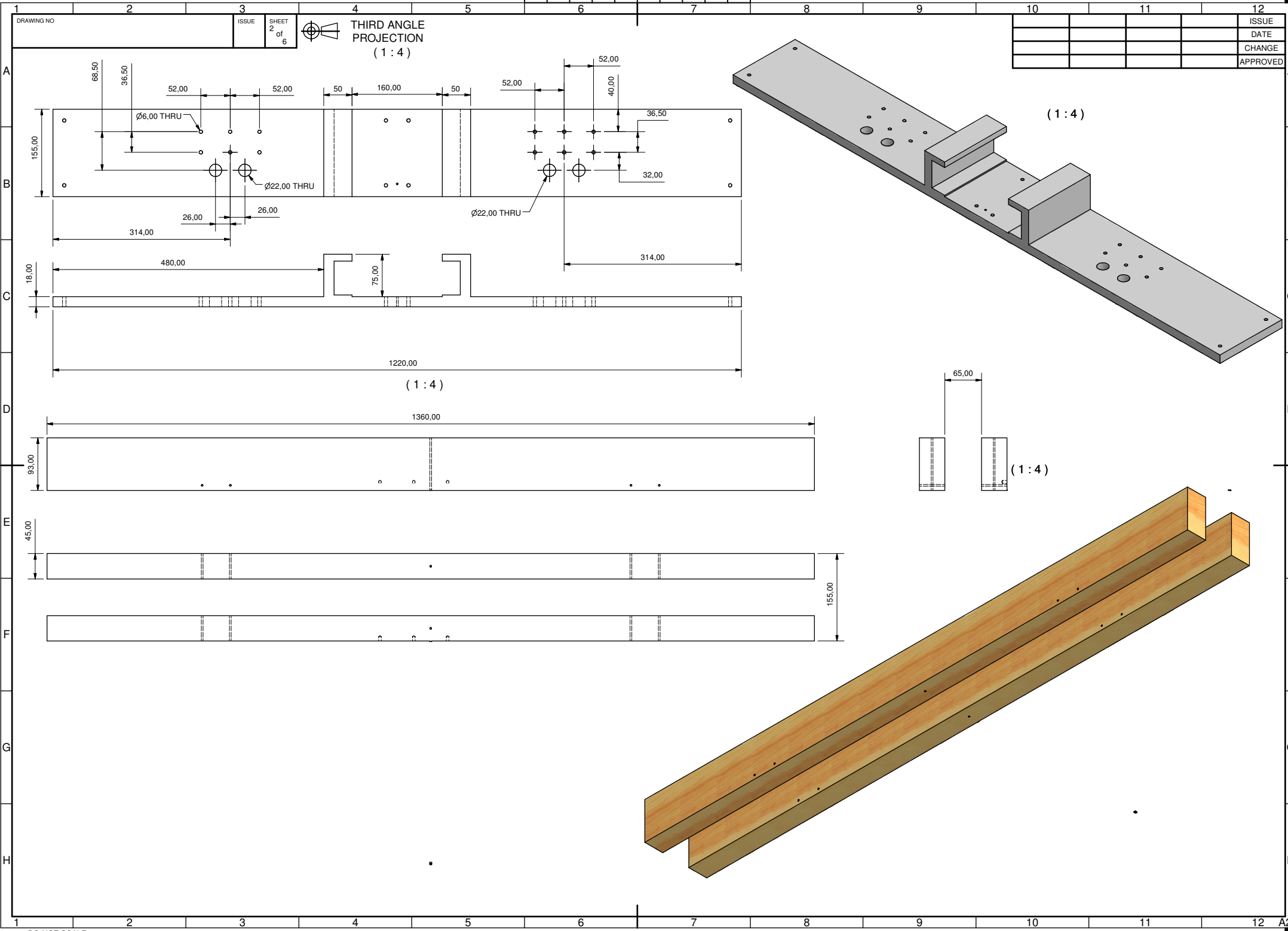
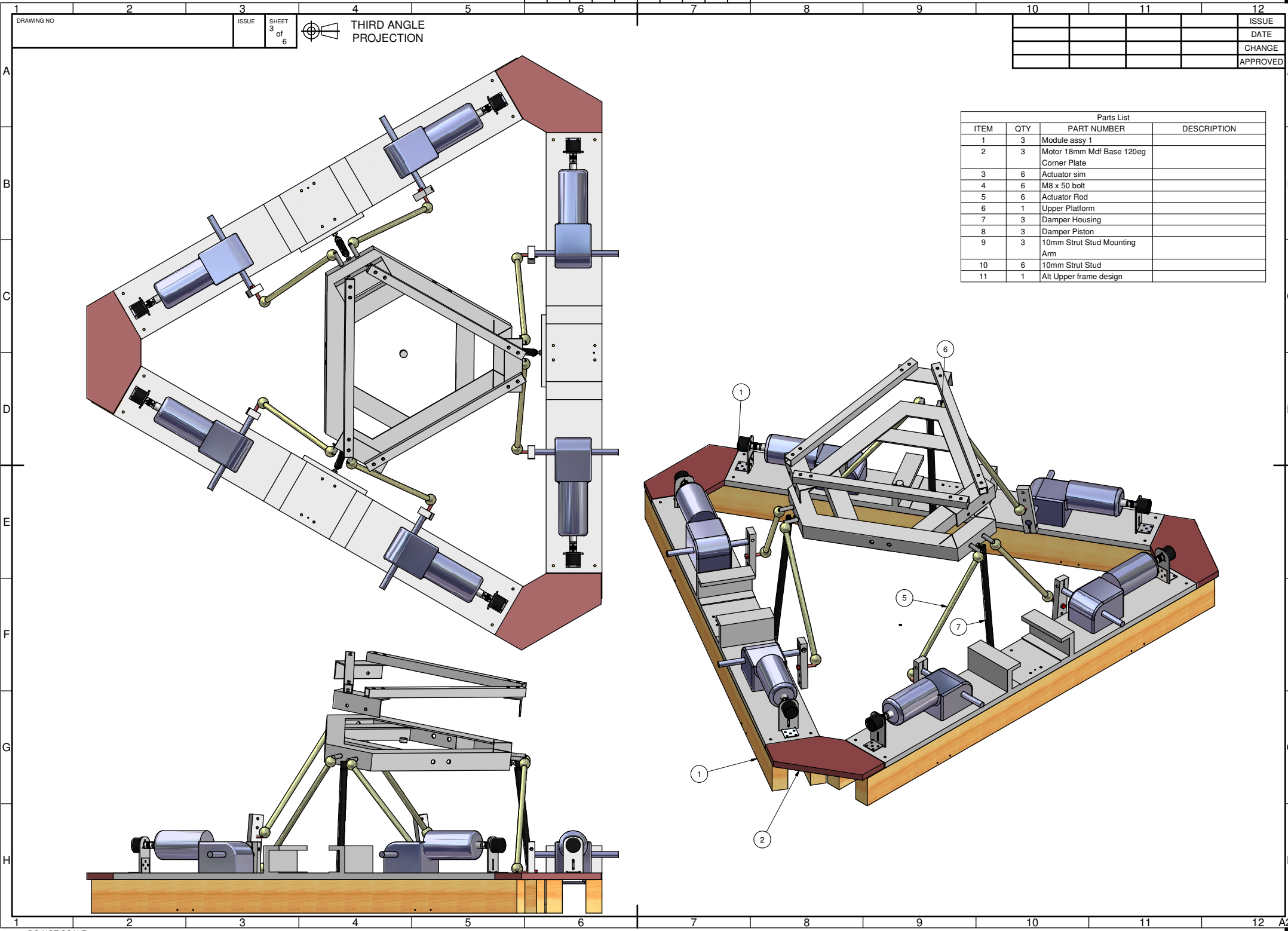


© AMETEK AIRTECHNOLOGY GROUP, LIMITED 2015.
THE REPRODUCTION, DISTRIBUTION AND UTILISATION OF THIS DOCUMENT AS WELL AS THE COMMUNICATION OF ITS CONTENTS TO OTHERS WITHOUT EXPRESS AUTHORISATION IS PROHIBITED.
PERMISSION IS GRANTED FOR THE REPRODUCTION OF THIS DOCUMENT FOR THE EXCLUSIVE USE OF THE INDIVIDUAL USER. ALL DETAILS REMAIN THE INTELLECTUAL PROPERTY RIGHT OF AMETEK AIRTECHNOLOGY GROUP LIMITED. ALL RIGHTS RESERVED IN
THE EVENT OF THE GRANT OF PATENT, UTILITY MODEL OR DESIGN.



DO NOT SCALE

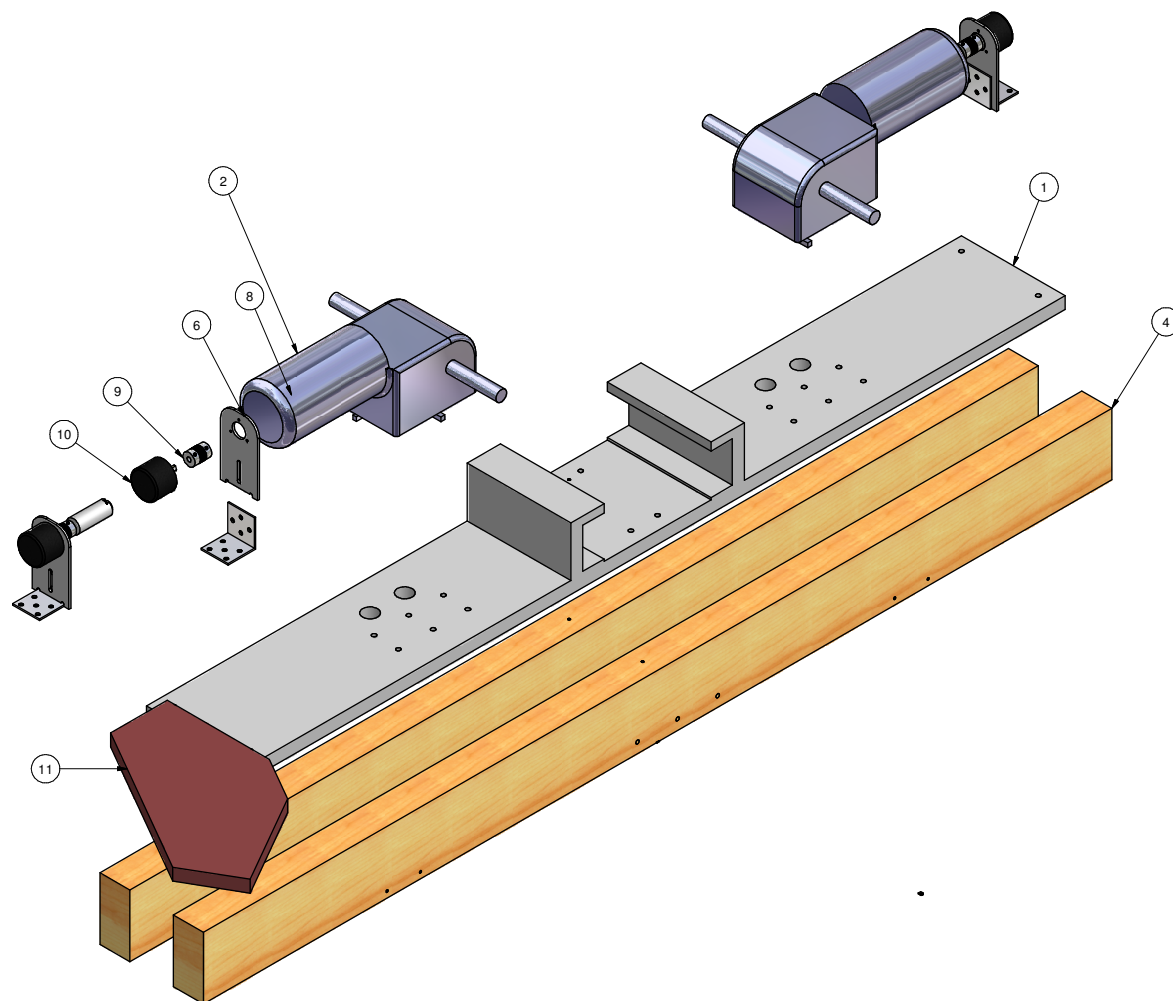
© AMETEK AIRTECHNOLOGY GROUP, LIMITED 2015.
THE REPRODUCTION, DISTRIBUTION AND UTILISATION OF THIS DOCUMENT AS WELL AS THE COMMUNICATION OF ITS CONTENTS TO OTHERS WITHOUT EXPRESS AUTHORISATION IS PROHIBITED.
ALL RIGHTS RESERVED IN THE INVENTION OF THE GRANT OF PATENT, UTILITY MODEL OR DESIGN.
ALL DETAILS REMAIN THE INTELLECTUAL PROPERTY RIGHT OF AMETEK AIRTECHNOLOGY GROUP LIMITED.





THIRD ANGLE PROJECTION

Parts List			
ITEM	QTY	PART NUMBER	DESCRIPTION
1	1	Motor 18mm Mdf Base Plate	
2	1	Motor Gearbox Combo model	
3	1	Motor Gearbox Combo model_MIR2	
4	1	Motor 18mm Mdf Base 2 x 75 wooden mount	
5	2	Encoder Mount inc shaft adapter	
6	1	Optical encoder Mounting Plate	
7	1	42 x 42 x 2 Angle bracket	
8	1	Shaft Adapter	
9	1	Coupler 6x 6 x 25	
10	1	Optical encoder Model	
11	1	Motor 18mm Mdf Base 120eg Corner Plate	



© AMETEK AIRTECHNOLOGY GROUP, LIMITED 2015.
THE REPRODUCTION, DISTRIBUTION AND UTILISATION OF THIS DOCUMENT AS WELL AS THE COMMUNICATION OF ITS CONTENTS TO OTHERS WITHOUT EXPRESS AUTHORISATION IS PROHIBITED.
THIS DRAWING IS THE PROPERTY OF AMETEK AIRTECHNOLOGY GROUP LIMITED. ALL DETAILS REMAIN THE INTELLECTUAL PROPERTY RIGHT OF AMETEK AIRTECHNOLOGY GROUP LIMITED. ALL RIGHTS RESERVED IN
THE EVENT OF THE GRANT OF PATENT, UTILITY MODEL OR DESIGN.

