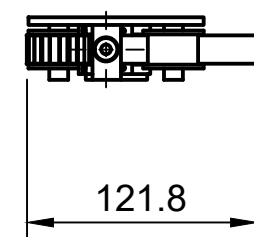
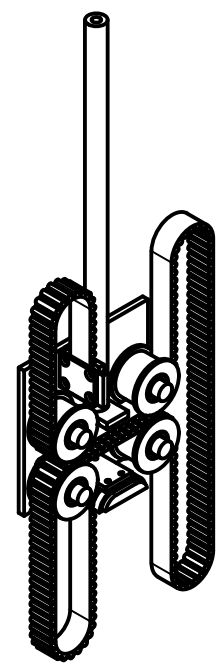
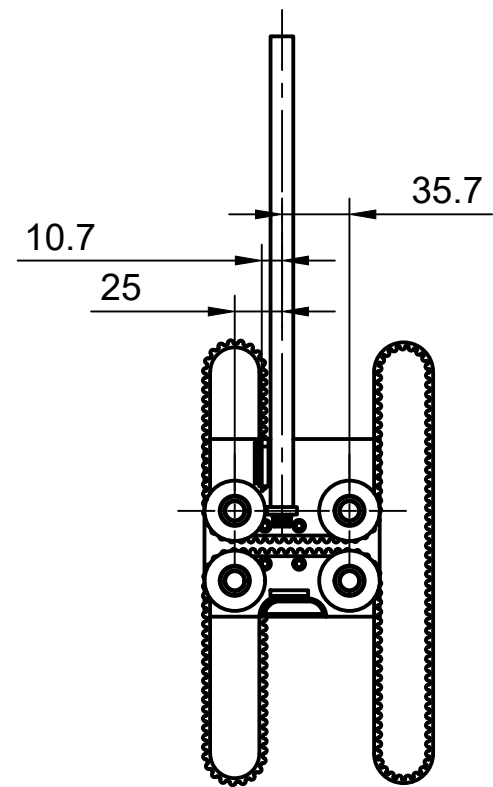


Tension force can be balanced in X axis by controlliong the offset of the two pulleys with 90° belt wrap



Overall width. I'll be adding a a belt guard laterbut it will remain ~5". Adding a pair of idler pulleys may allow this to be reduced a little further on the right hand side.
Note: Motor will extended beyond this.

Tension forces are balanced in Y axis by aligning the shaft with the centre of the belt line

Dept.	Technical reference	Created by	Approved by
		Jake Hawkins 2022-01-06	
		Document type	Document status
		Title	DWG No.
		Rev.	Date of issue
		Sheet	1/1

Actuator Design