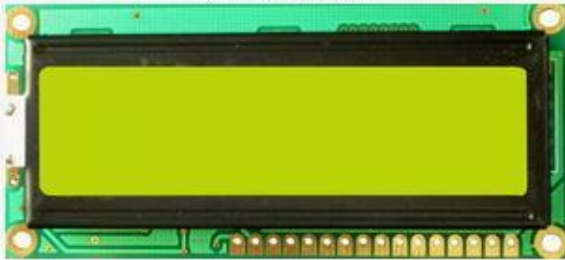


**ATM1602B**

Product photo:



Dimension:	84(L)x44(W)x12.5(H)
V.A:	64.5(L)x16.4(W)
Dotsize:	3.51 x 5.75
Dotpitch:	0.56x0.61
Controller/Driver	S6A0069
	5 x 8 with Cursor Dots
	1/16 Duty, 1/5 Bias, 16CHAR x 2LINE

## OPTIONS FOR SERIES

**PORLARIZER Type**

- ☐ R=Reflective
- ☐ F=Transflective
- ☐ M=Transmissive, Positive
- ☐ N=Transmissive, Negative

**BACKLIGHT TYPE**

- ☐ L=LED backlight (array)
- ☐ S=LED backlight (side)
- ☐ E=EL backlight

**TEMPERATURE**

- ☐ S = 0~50 C
- ☐ W = -20 ~ 70 C

**LCD PANEL**

- ☐ T = TN type
- ☐ G = STN gray type
- ☐ Y = STN yellow-green type
- ☐ B = STN blue type
- ☐ F = FSTN type

**VIEWING ANGLE**

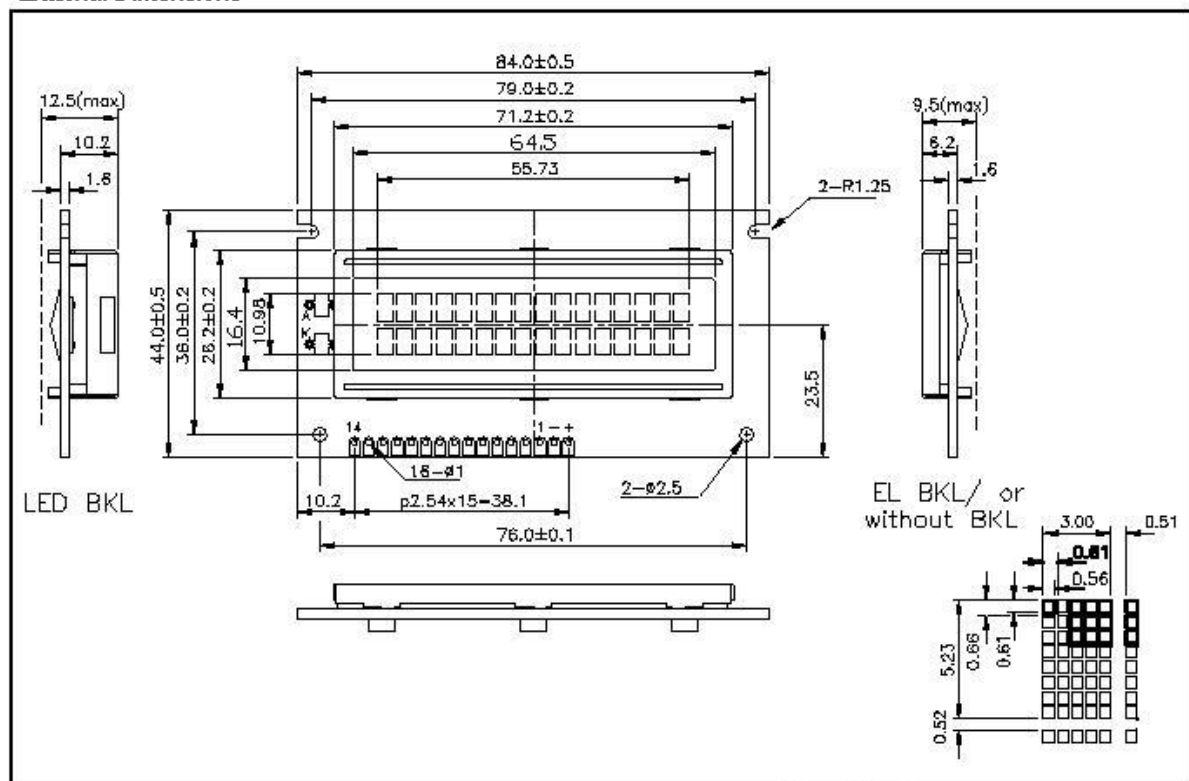
- ☐ B=Bottom View ( 6:00 )
- ☐ T=Top View ( 12:00 )

# ATM1602B SERIES STANDARD CHARACTER LCD MODULES

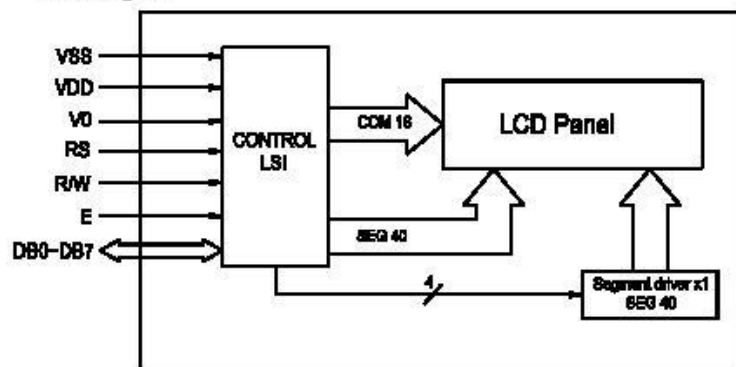
- \* 5 x 8 with Cursor Dots
- \* View Angle (6:00)
- \* 1/16 Duty, 1/5 Bias, 16CHAR x 2LINE
- \* LED Backlight (Yellow green)

- \* Transflective
- \* STN (Yellow green)
- \* Controller/Driver (S6A0069)
- \* Operating Temp (-20 $^{\circ}$ C ~70 $^{\circ}$ C)

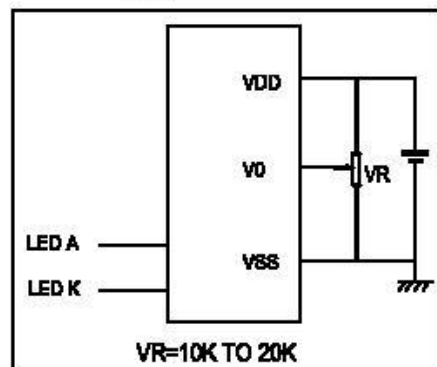
## External Dimensions



## Block Diagram



## Power Supply



## Mechanical Specifications

Item	Description(mm)
Size	84(L)x44(W)x12.5(H)
V.A	64.5(L)x16.4(W)
Character Pitch	3.51 x 5.75
Dot Size	0.56*0.61

## Electrical Specifications

Item	Symbol	Min	Typ	Max	Unit
Supply Voltage for Logic	VDD	4.5	5.0	5.5	V
Supply Voltage for LCD	VLCD	4.0	4.5	5.0	V
Supply Current for Logic	IDD		1.0	2.0	mA
Supply Current for LED	IF			80	mA

## Interface Signals---- J1

Pin	Symbol	Level	Description	Pin	Symbol	Level	Description
1	VSS	0V	Ground	7~14	DB0~DB7	H/L	Data Bus Line
2	VDD	+5V	Supply Voltage for Logic	15	A	--	Back Light anode:+4.2V
3	V0	--	Operating Voltage for LCD	16	K	--	Back Light cathode:0V
4	R/S	H/L	H: Data L: Instruction Code				
5	R/W	H/L	H: Data Read L: Data Write				
6	E	H,H-L	Enable Signal				