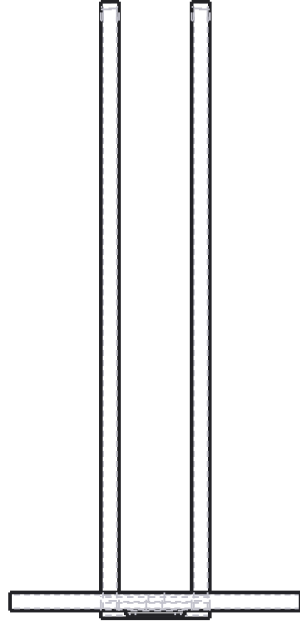
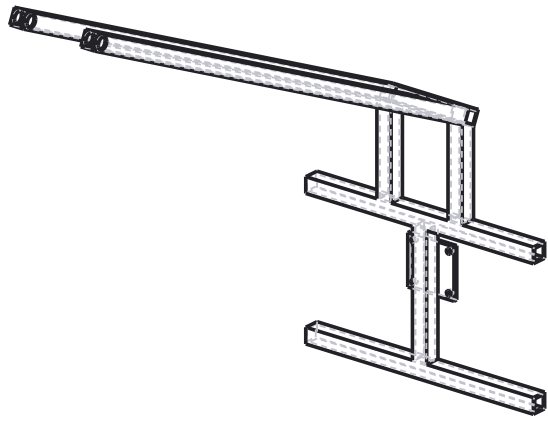


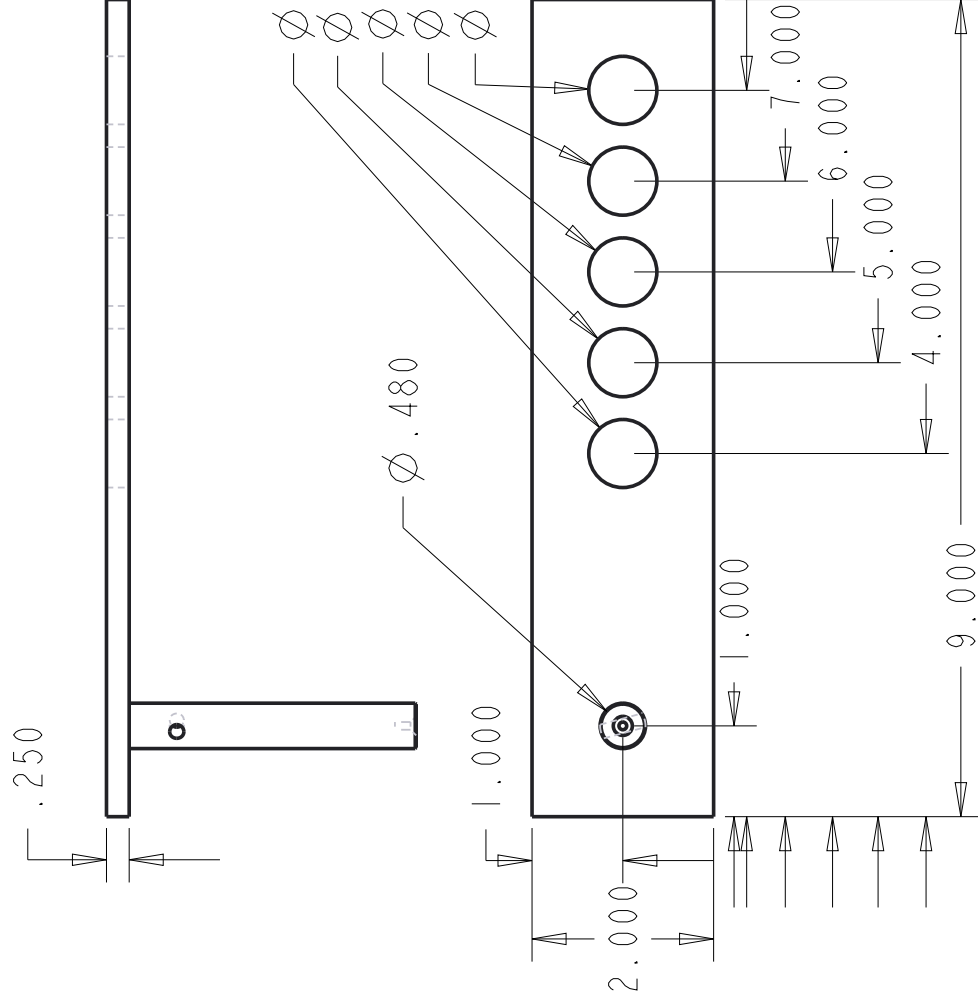
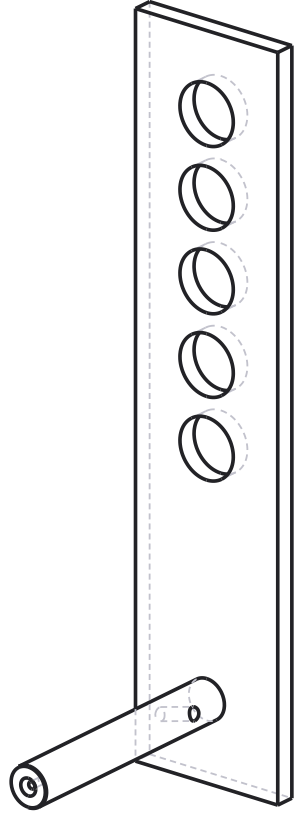
Seat Frame

0.1 scale, 1" square tubular steel (0.12" thick)

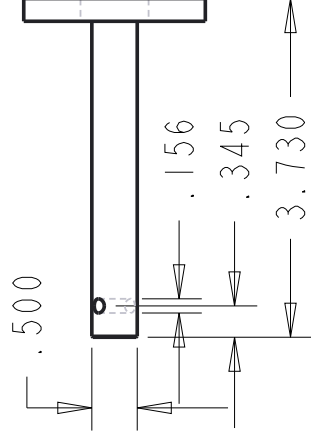
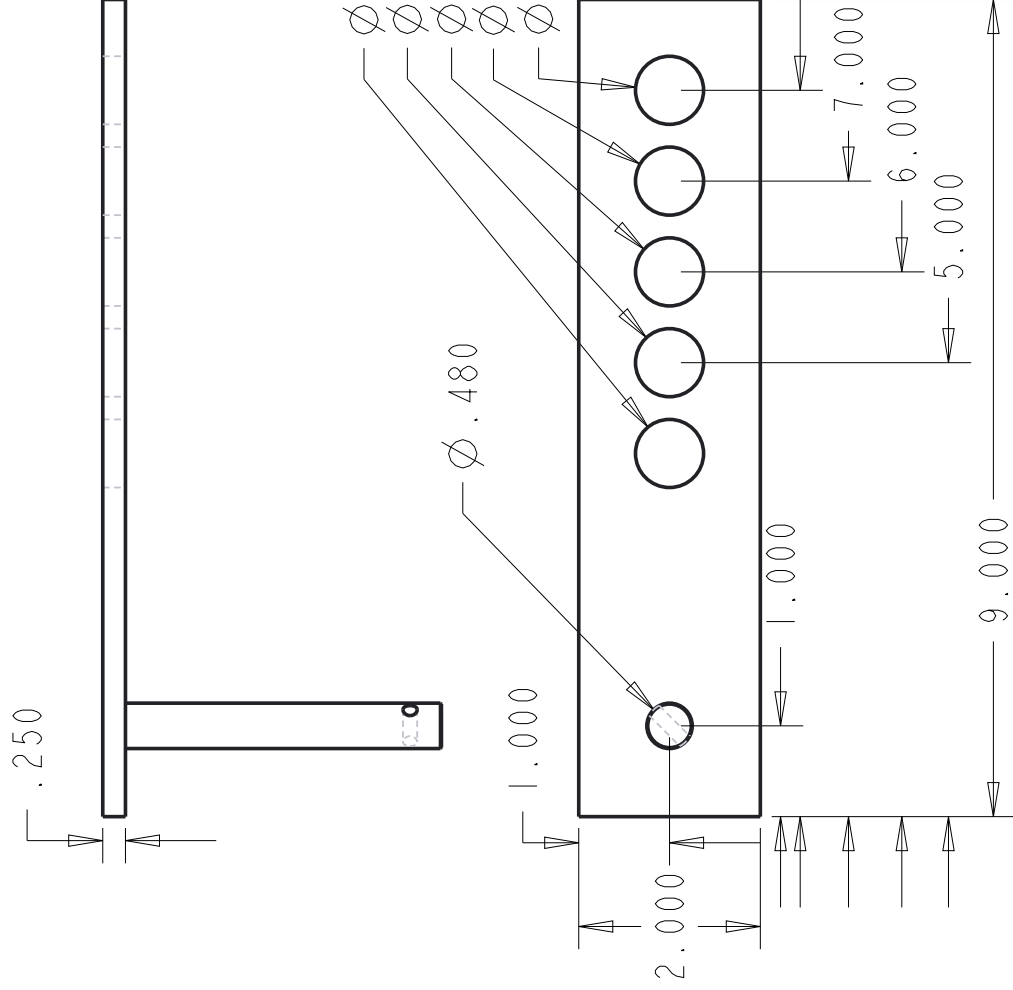
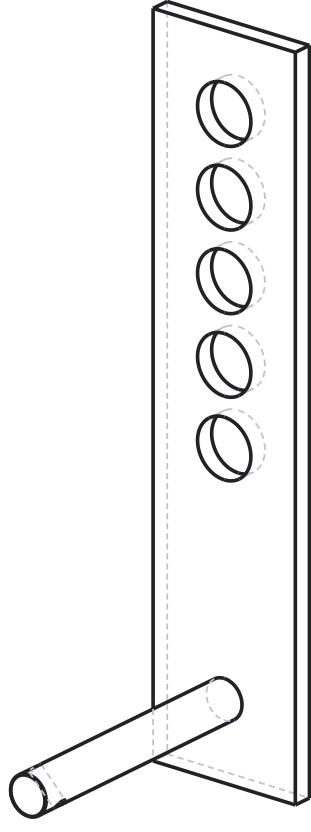
Larry Loprete, 2019

Notes: Universal joint mounting plate shown for reference only. Not to scale. See joint drawings. Holes needed in H-section to mount to seat



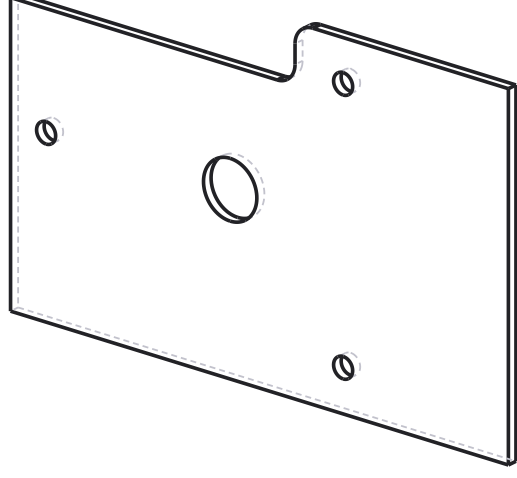
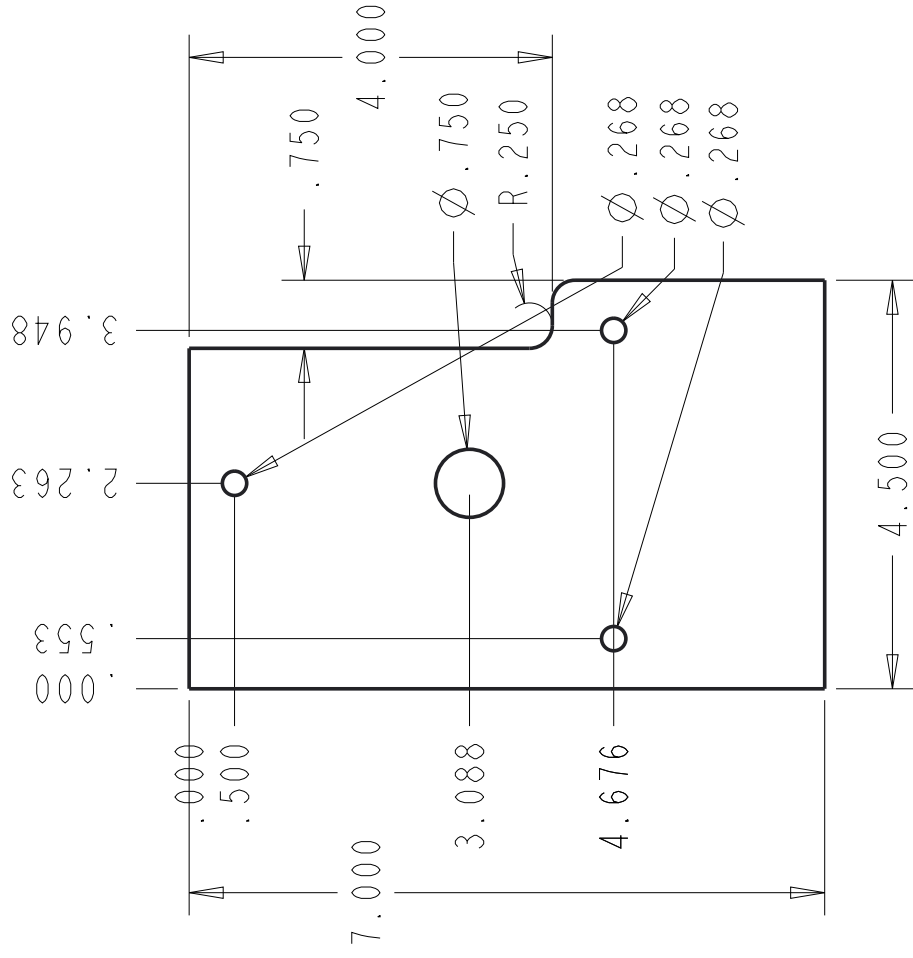
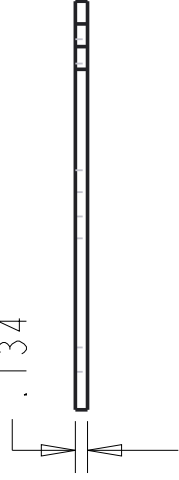


Lever Arm I
 0.5 scale, 0.25" steel welded to 0.5" rod
 Larry Loprete, 2019
 Note: Rod tapped for lathe



Lever Arm 2
 0.5 scale, 0.25" steel welded to 0.5" rod
 Larry Loprete, 2019
 Note: Rod tapped for lathe

.134



Motor Mounting Plate
0.5 scale, 0.134" steel
Larry Loprete, 2019
Notes: Bent inward above weld to base (not shown)
Mirror plate for other motor