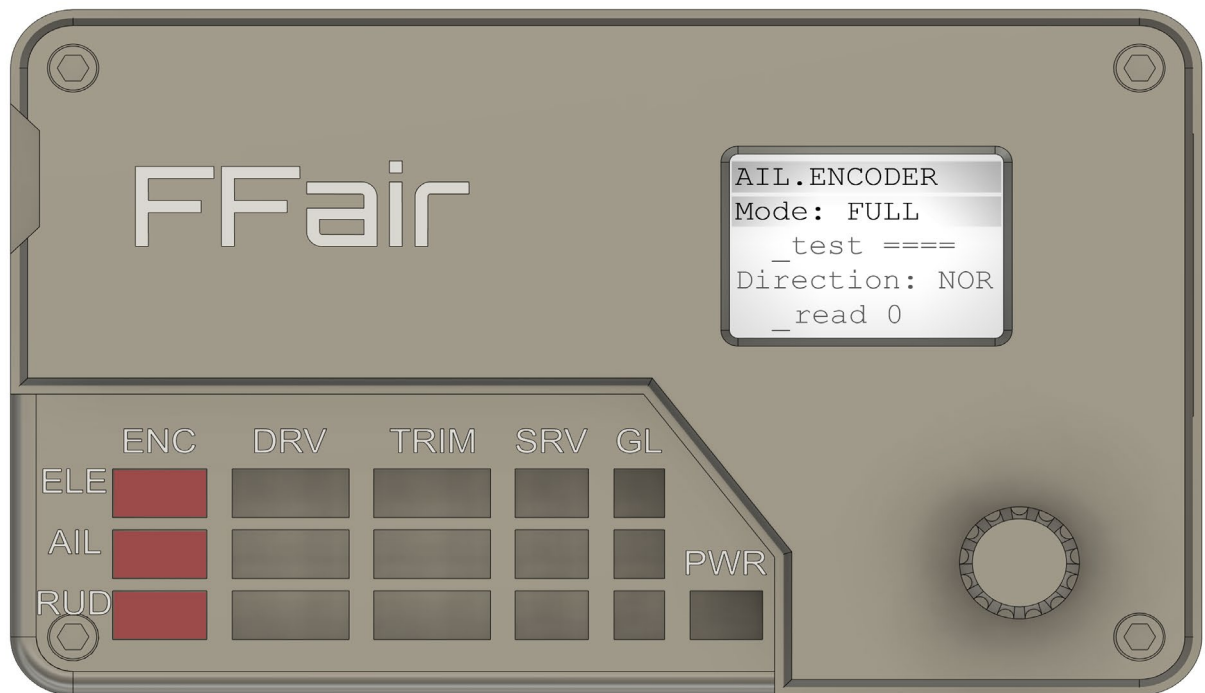


# FFair system WIRING GUIDE

## ENCODER. LPD3806



gnd	5v	pinA	pinB
-----	----	------	------

Gnd: black

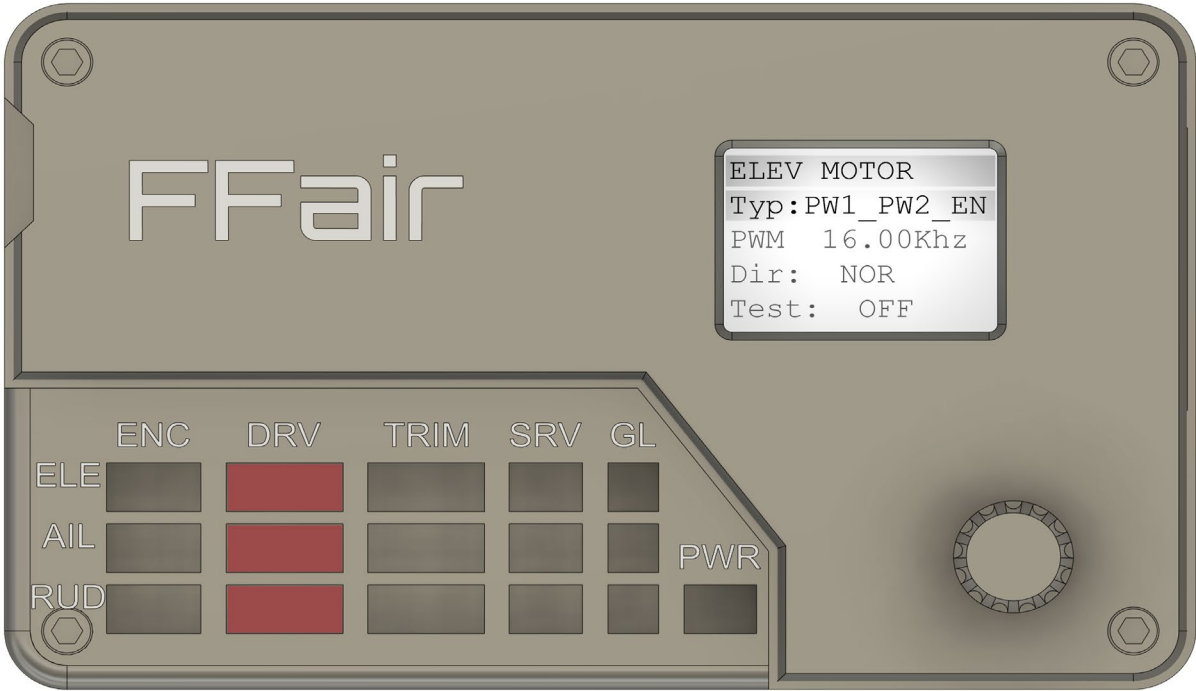
5v: red

Pin A: any other cable

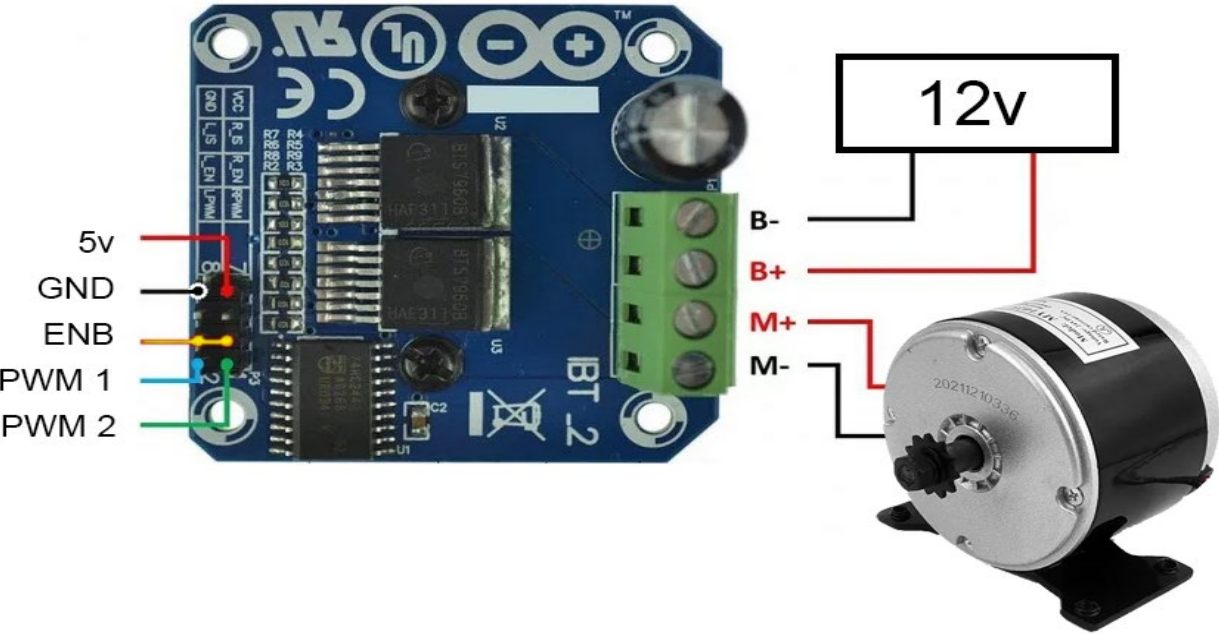
Pin B: any other cable



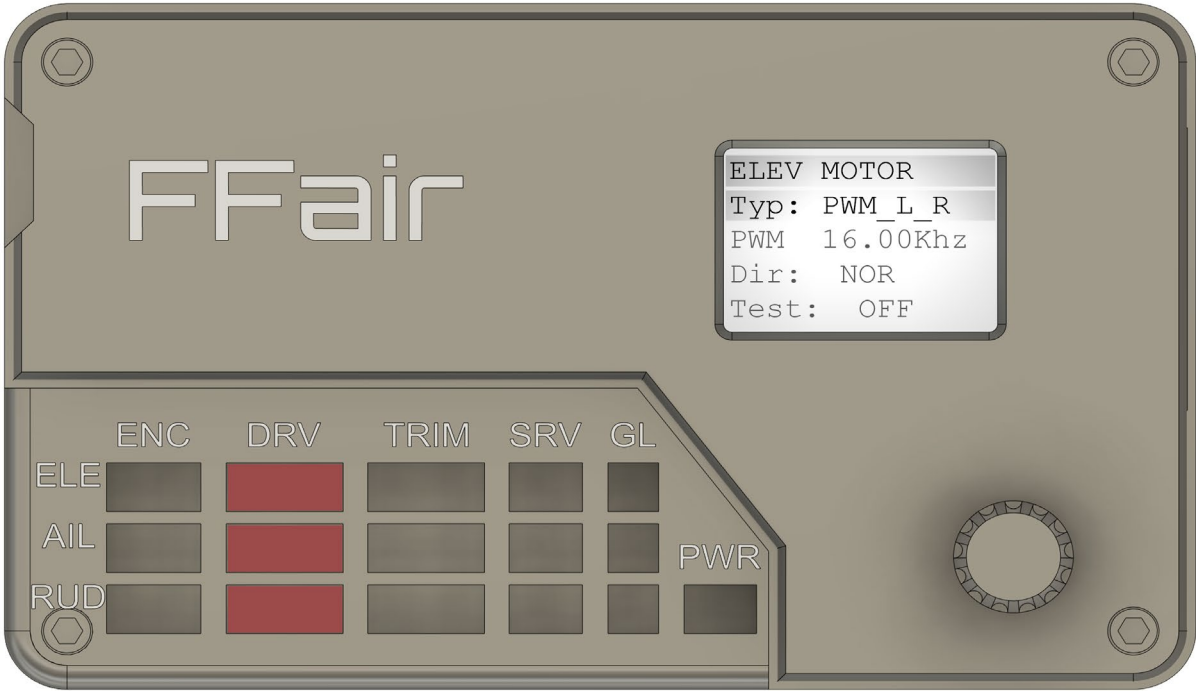
MOTOR DRIVER. BTS7960



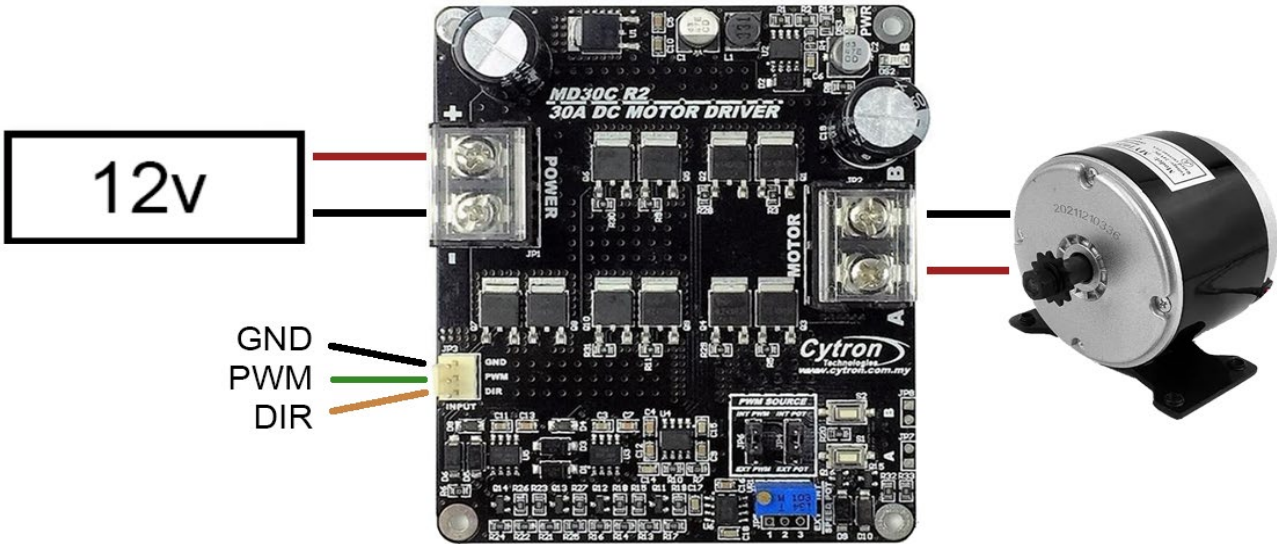
gnd	5V	pwm1	pwm2	enb
-----	----	------	------	-----



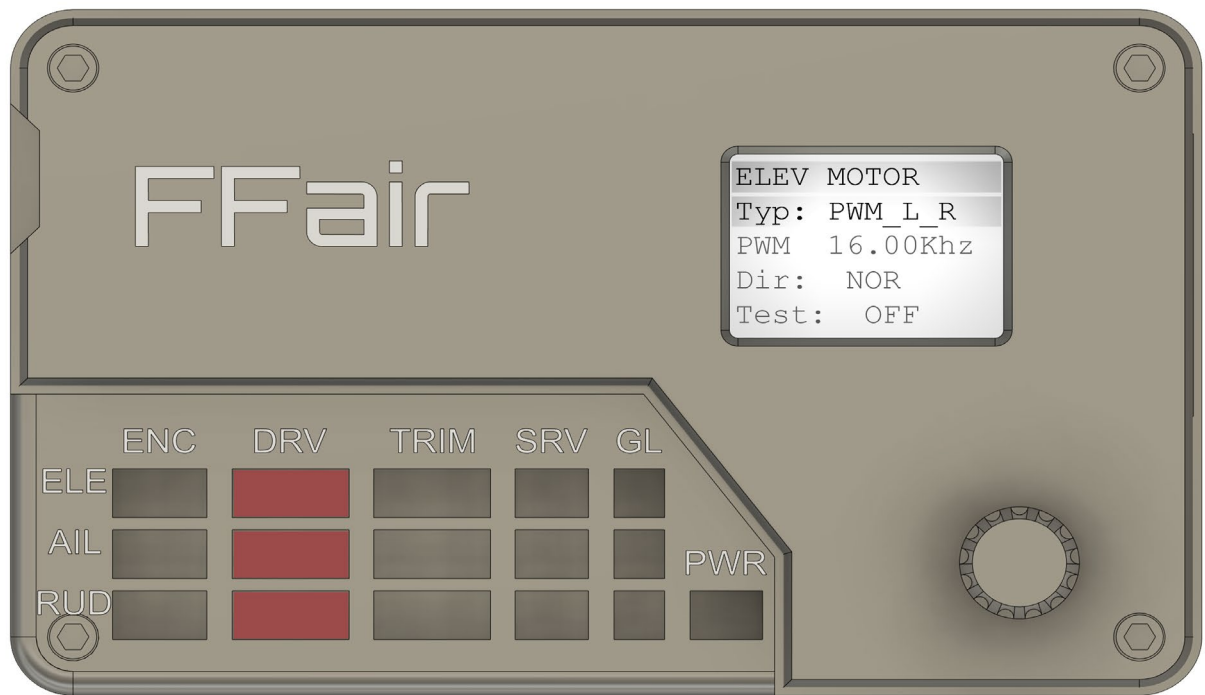
MOTOR DRIVER. CYTRON MD30C



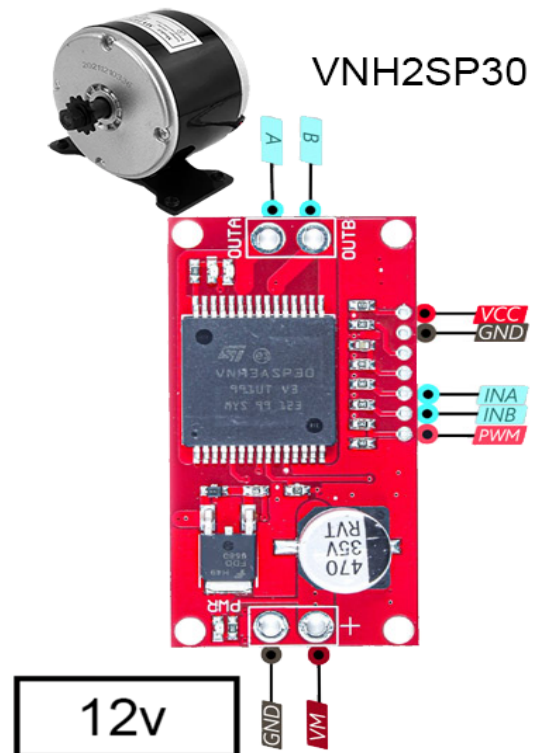
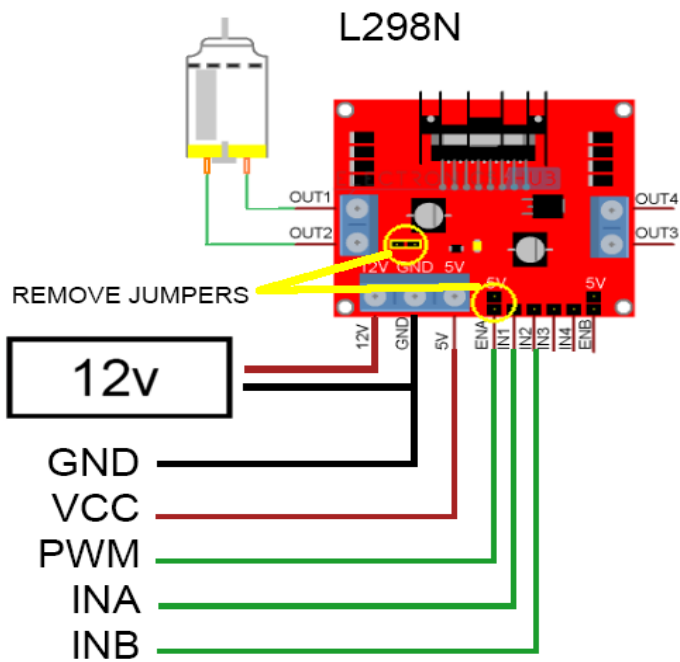
gnd		pwm		dir
-----	--	-----	--	-----



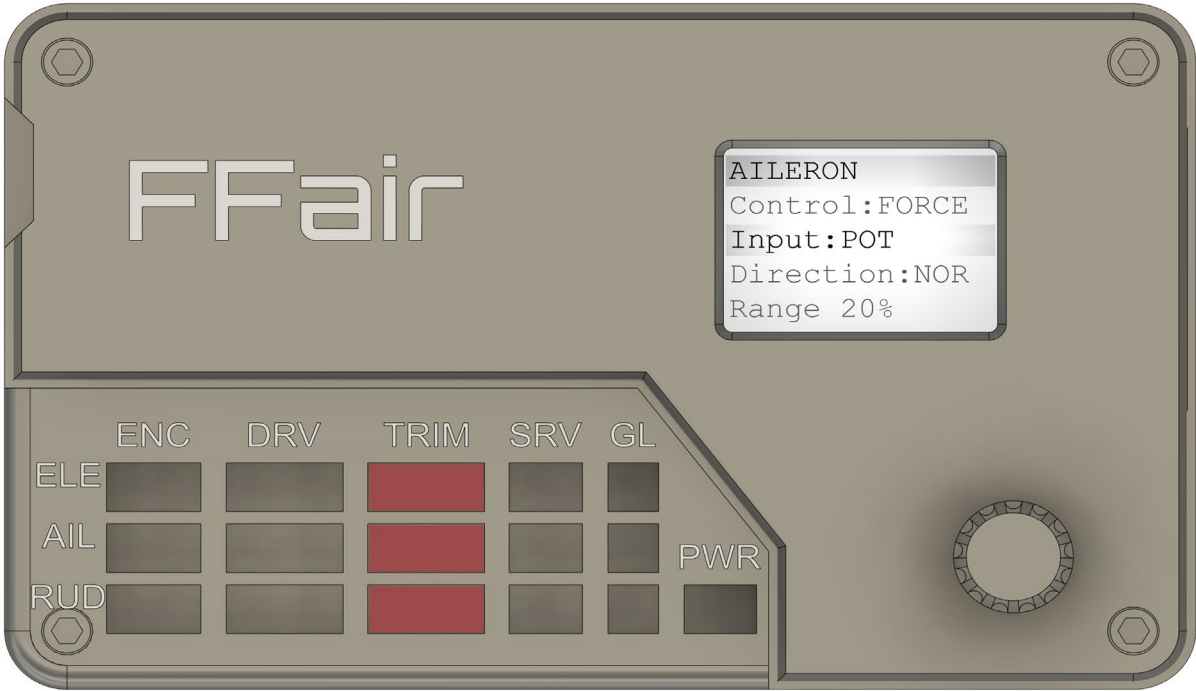
## MOTOR DRIVER. L298N STYLE. VNH2SP30



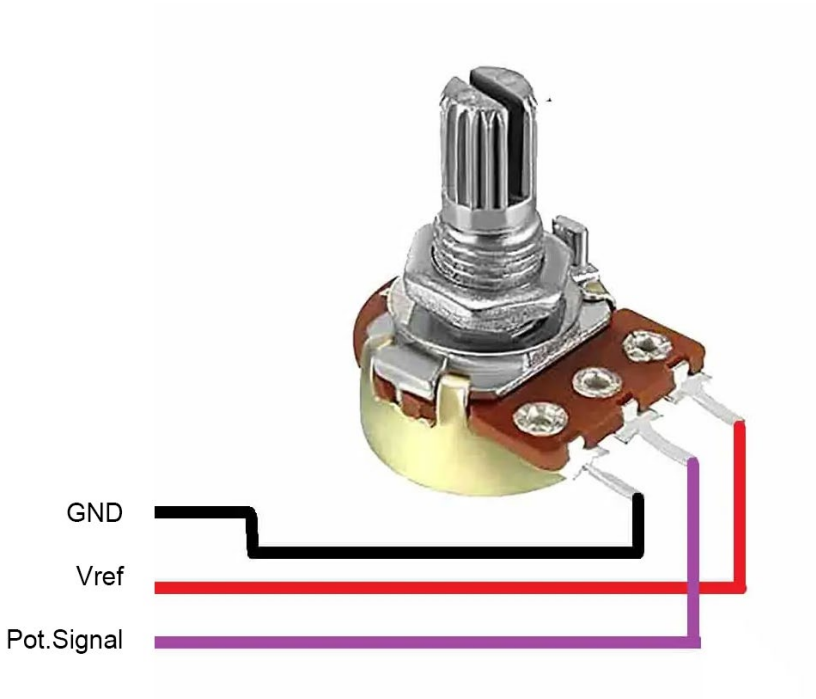
GND	VCC	PWM	INA	INB
-----	-----	-----	-----	-----



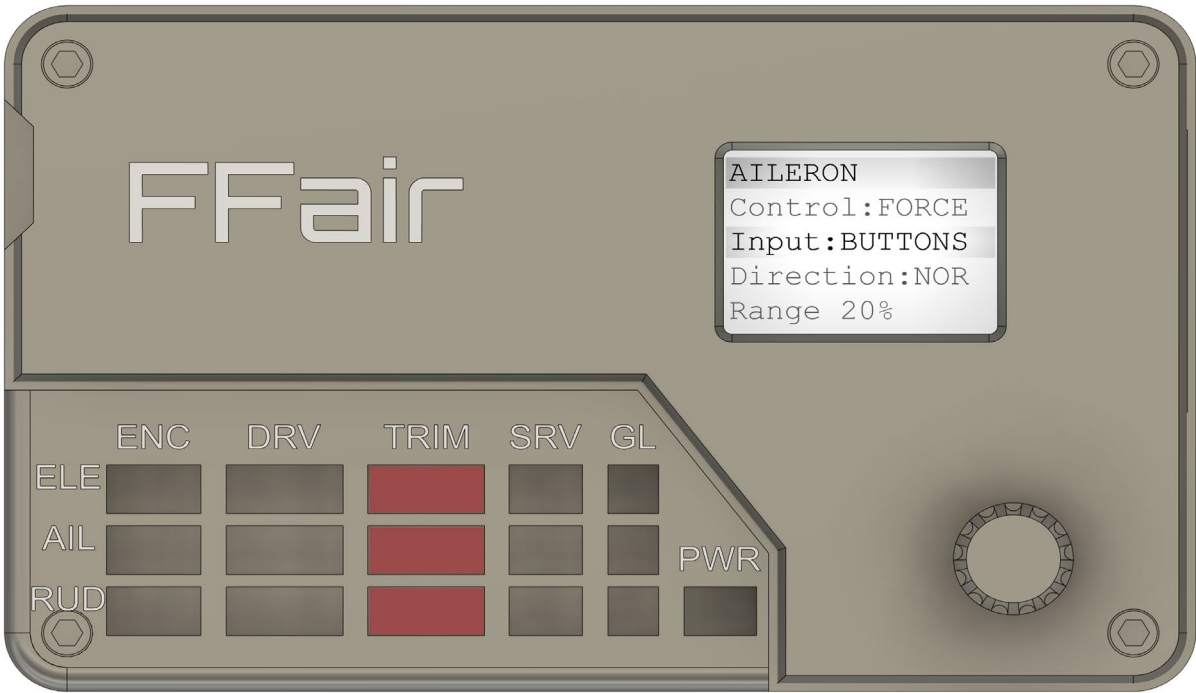
TRIM. POTENTIOMETER



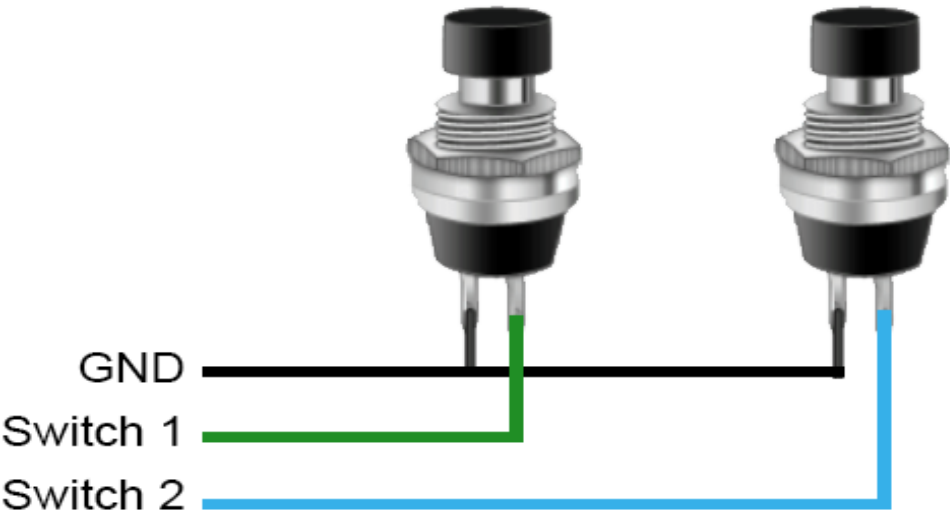
gnd	Vref	Pot		
-----	------	-----	--	--



TRIM. BUTTONS

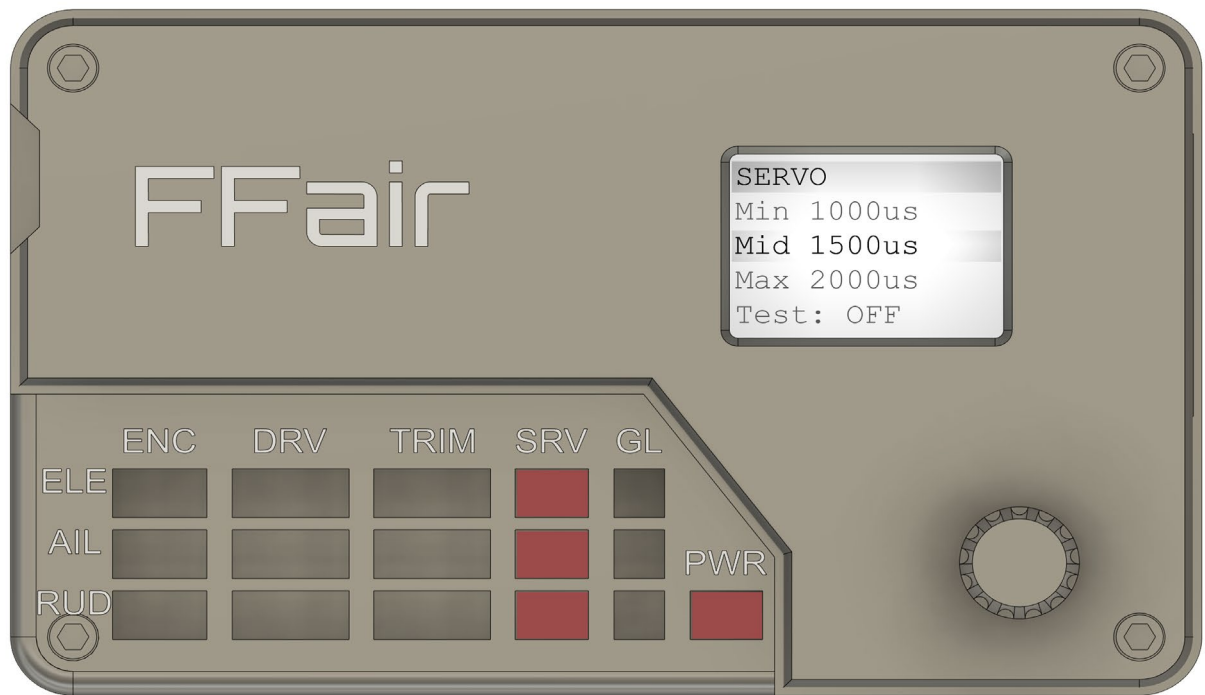


gnd			sw1	sw2
-----	--	--	-----	-----





## TRIM INDICATOR. SERVO

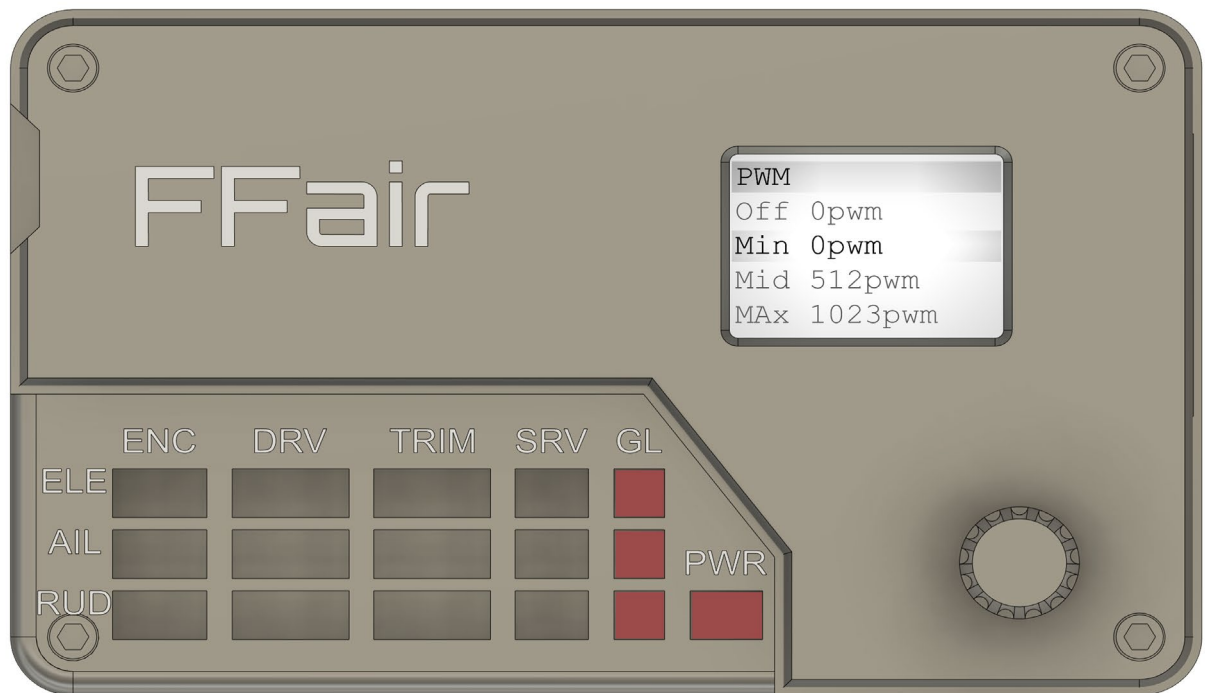


You need to use PWR connector when using Servo indicators. The voltage in Vs+ power connector will feed V+ in servo connector. 5v 1A power supply recommended.





## TRIM INDICATOR. GALVANOMETER



You need to use PWR connector when using galvanometer indicators. The voltage in Vg+ power connector will feed V+ in servo connector. It depends on galvanometer, but 12v is usually fine. You will have to look for a resistor to find max galvanometer deflection when 1023pwm signal output.

Only the galvanometers that rest at one side (min or max) are supported, because FFair can only move the needle to one side.

