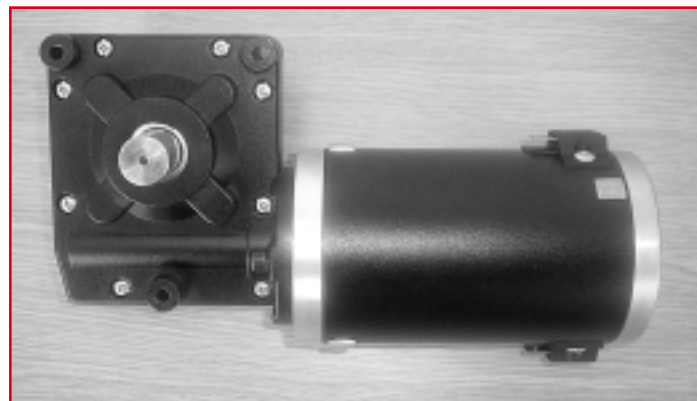


# MCP Series Wormwheel Gearboxes

The most competitive ruggedised wormwheel gearboxes on the market can be supplied with or without AC/DC motors.

A quality, high power to weight ratio, low noise and reliable gearbox is robustly constructed in either ruggedised die-cast aluminium or composite materials (high strength plastic) make MCP gearboxes the obvious first choice.

## MCP 2



### Ratios:

12:1, 25:1, 30:1, 50:1, 60:1  
Other ratios available on request

### Features and Options

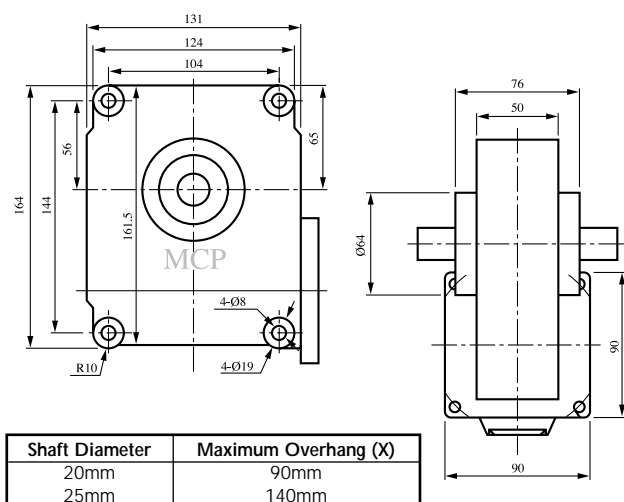
- Compatible with ZYT DC Series Motors
- Extensive Range of Ratios
- Customised shafts to suit any application including:-
  - Variable Diameters
  - Hollow shafts
  - Machined ends
- Delrin®, Phosphor Bronze and Steel Gears
- Available in ruggedised die-cast aluminium or composite materials (high strength plastic)
- Lubricated for life
- Designed for Low Noise operation

ZYT Motor/Gearbox Configurator									
Motor Dia. in mm	Motor Length in mm	Volt. DC	Gearbox	Ratio	Option One	Option Two	Option Three	Option Four	Option Five
See Separate Motor Chart for Specifications			MCP4		AD	DR	BK	EC	CS##
			MCP2		CM	BZ	MRB		
						ST			

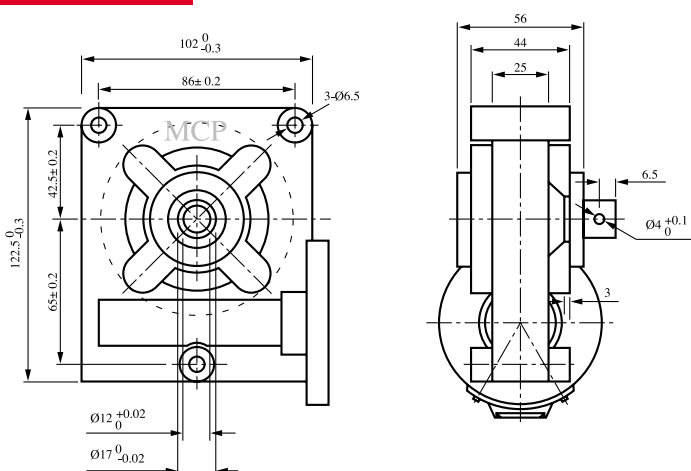
### Example:

ZYT80 147 24 MCP4 25:1 AD DR MRB EC CS##

**Key:** AD = Die-cast Aluminium Housing  
 CM = Composite Material Housing (high strength plastic)  
 DR = Delrin® Gears  
 BZ = Bronze Gears  
 ST = Steel Gears  
 BK = Electric Brake  
 MRB = Electric Brake with Manual Release  
 EC = Rubber End Cover  
 CS = Custom Shaft followed by customer number



## MCP 4



N.B. stall torque = 2.5 x continuous rated torque • All dimensions in millimetres • Drawings not to scale • MCP reserve the right to change specifications