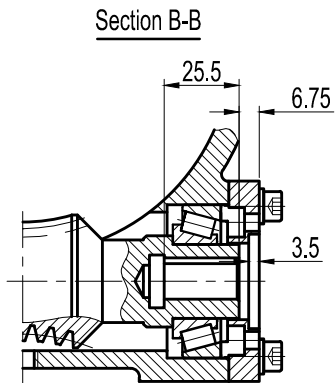
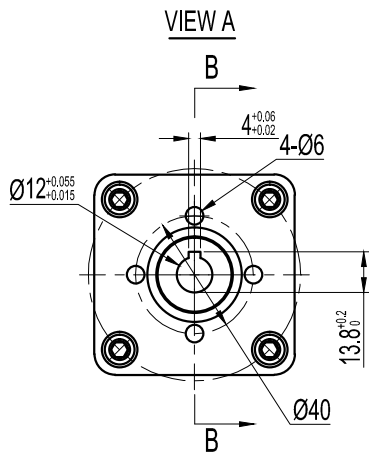
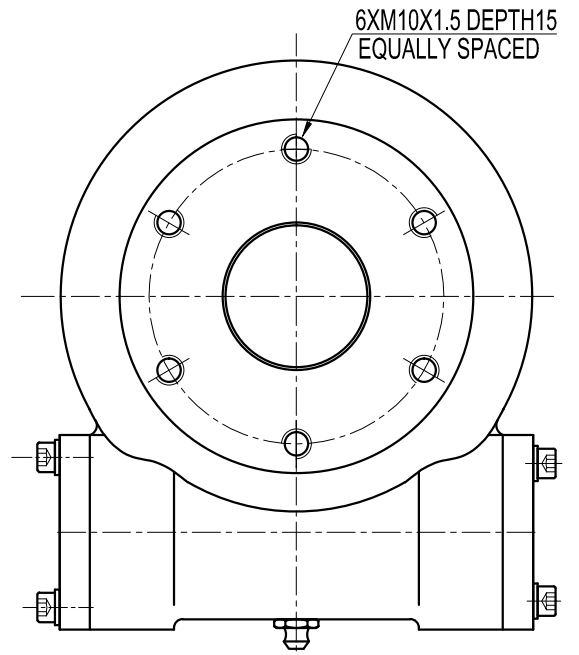
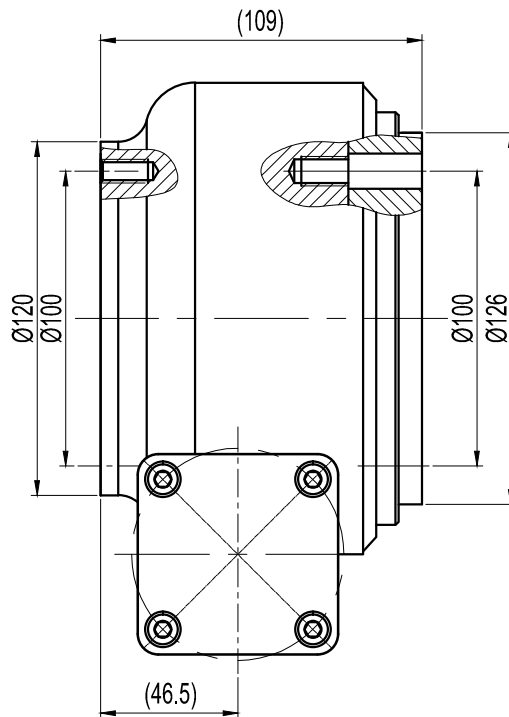
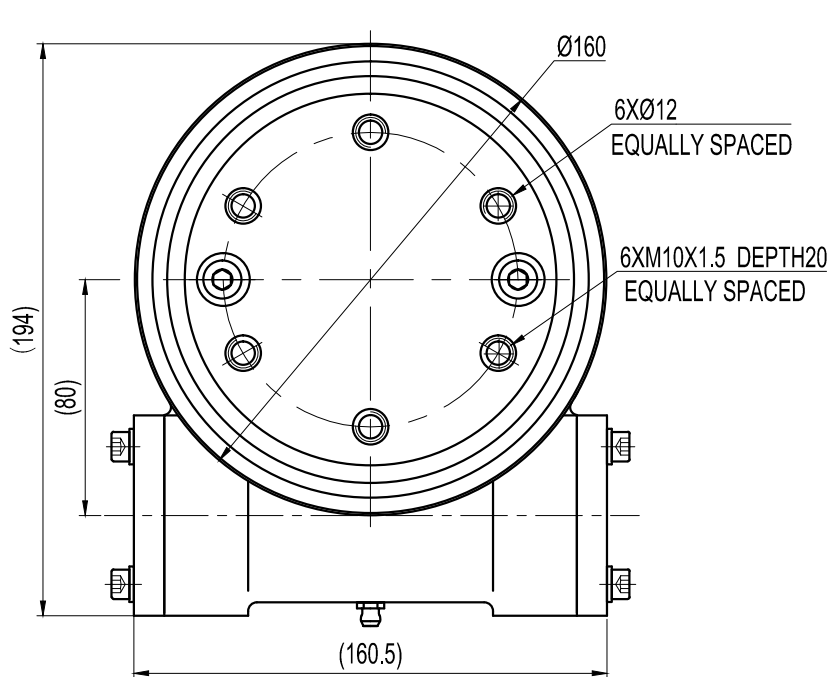




HOURGLASS WORM SLEW DRIVE



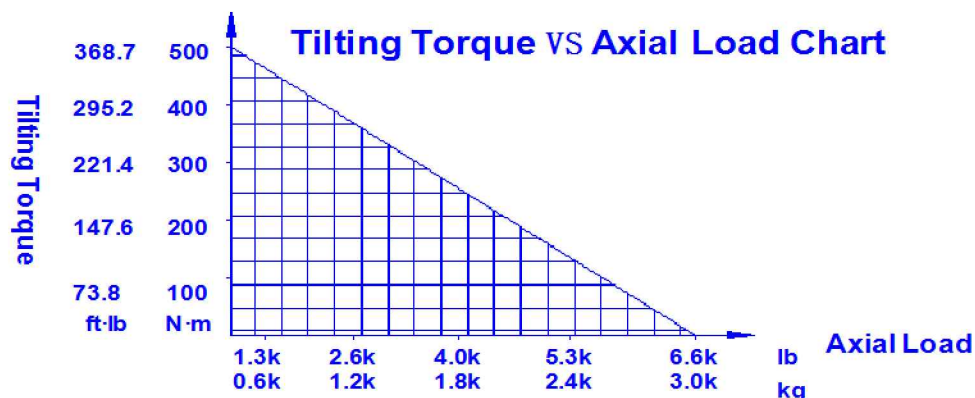
DESIGNED BY	WJY 2013/08/06			KMI GROUP	www.kinematicsmfg.com	
CHECKED BY	ZMF 2013/08/06					
APPROVED BY	WCH 2013/08/06					
ALL PROPRIETARY RIGHTS IN THE SUBJECT MATTER HEREOF ARE RESERVED, AND NO PERMISSION IS GRANTED TO REPRODUCE THIS PRINT IN WHOLE OR IN PART, OR TO DISCLOSE ANY OF THE INFORMATION TO OTHERS.			WEIGHT	SCALE	SLEWING DRIVE	
				NTS		
SYMBOLE ISO	SIZE	A3	SHEET	1/1	SE3B-62MHQ-12MRC	REV
			THE TOLERANCE NOT MENTIONED IS REFERRED TO ISO 2768-VL CASTING TOLERANCE ISO 8062-CT10			A


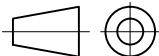
SLEWING DRIVES PERFORMANCE DATA

Model Code : SE3B-62MHQ-12MRC

Slewing Drive Ratio	62:1	-		
Rotating Output Rated Speed	-	Type Code	-	
Efficiency	30%	Rated Voltage	-	VDC
International Protection (IP)	55	Output Speed	-	rpm
Motor Temperature	-	Rated Current	-	A
Worm Drive Temperature	- 20℃ to + 120℃	Rated Output Power	-	w
Traceability	CEDS	Motor Rated Speed	-	rpm
Torsion Stiffness	137 Nm/mRad	Output Torque	-	N·m
Bending Stiffness	190Nm/mRad	Stall Torque	-	N·m

Slewing Drive Loading Data	HQ Type			
Normal Output Torque	599	N·m	442	ft·lb
Max. Output Torque(3 sec.)	899	N·m	663	ft·lb
Backwards Holding Torque	3,000	N·m	2,213	ft·lb
Tilting Torque	500	N·m	369	ft·lb
Static Radial Rating	16.60	kN	3,732	lb
Static Axial Rating	29.40	kN	6,609	lb
Dynamic Radial Rating	8.40	kN	1,888	lb
Dynamic Axial Rating	9.60	kN	2,158	lb



DESIGNED BY	WJY	2013/08/06	 KMI GROUP www.kinematicsmfg.com	SLEWING DRIVE	
CHECKED BY	ZMF	2013/08/06			
APPROVED BY	WCH	2013/08/06			
<small>ALL PROPRIETARY RIGHTS IN THE SUBJECT MATTER HEREOF ARE RESERVED, AND NO PERMISSION IS GRANTED TO REPRODUCE THIS PRINT IN WHOLE OR IN PART, OR TO DISCLOSE ANY OF THE INFORMATION TO OTHERS.</small>			WEIGHT	SCALE	SE3B-62MHQ-12MRC
				NTS	
SYMBOLS	ISO	SIZE	A4	SHEET	1/1
					REV A