

## **SpaceMonkey plugin Beta**

I have only tested the plugin against Wreckfest.

The plugin is in a beta and is very similar to the Dirt 4 plugin.

Only motion available for the moment as I only use that on my rig.

Install latest version of SpaceMonkey here and read the instructions.

<https://github.com/PHARTGAMES/SpaceMonkey>

Simtools filtering settings for SpaceMonkey is in the file WreckfestFilters\_Simtools.txt.

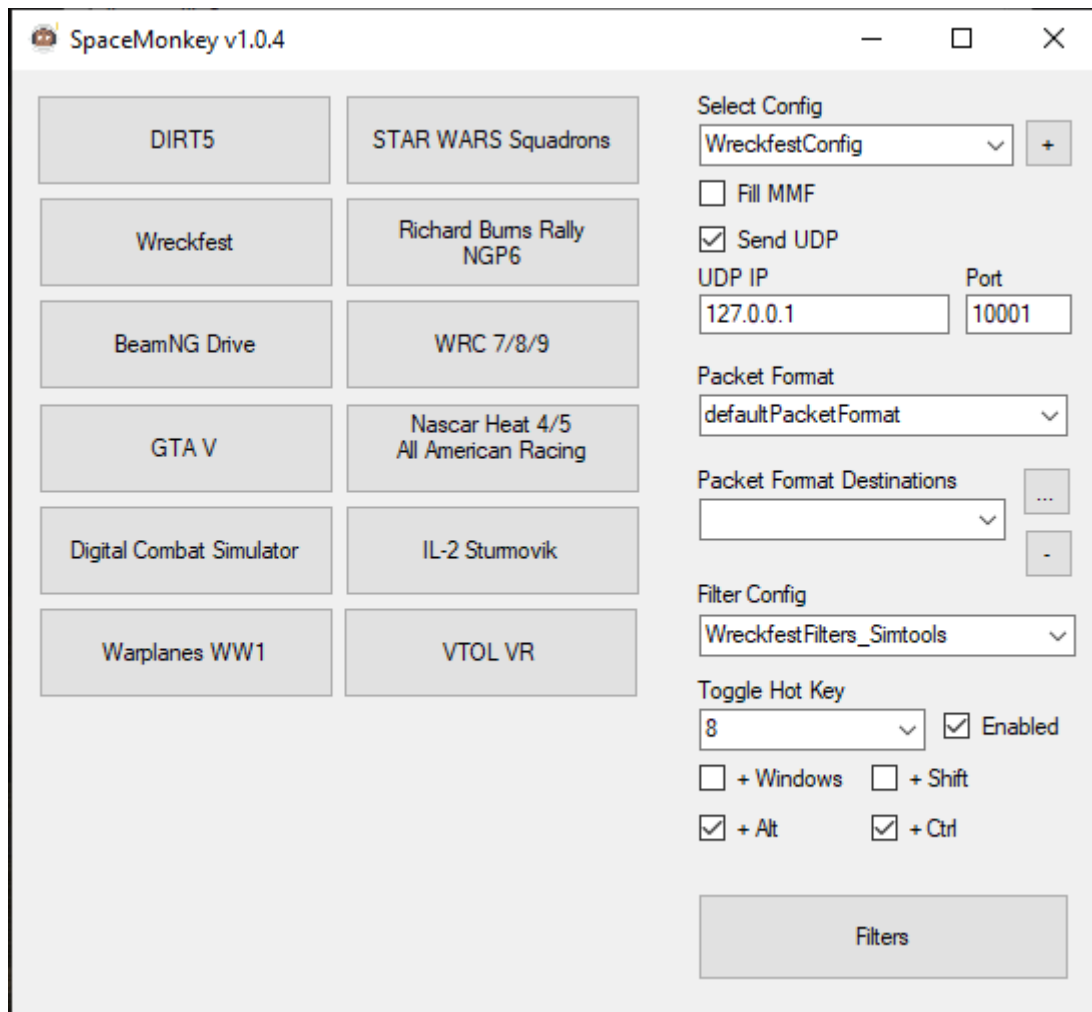
Place that file in the filters folder of SpaceMonkey, on my box its

C:\Program Files (x86)\PHARTGAMES\SpaceMonkeyTP\Filters

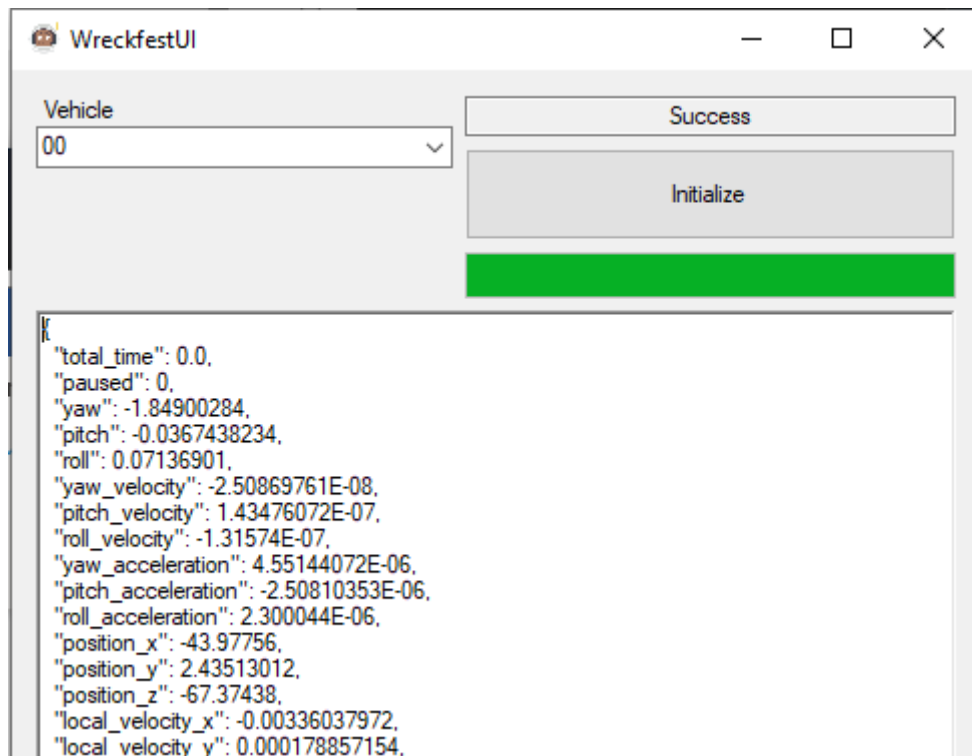
Install the beta SpaceMonkey plugin in Simtools.

Start Wreckfest in 32-bit mode and select a track and a car and get behind the wheel.

Now start SpaceMonkeyTP as administrator.



When pressing the Wreckfest button a new window opens, press Initialize and wait for the telemetry to start running. I have noticed that not all cars works so if the car does not work try another one.



Run Simtools as usual and it will go online as soon as you start the SpaceMonkey application.

Axis like Dirt Rally, 99-100% intensity and tuning as below.

